



S-100P rabbit pAb

Cat No.:ES7116

For research use only

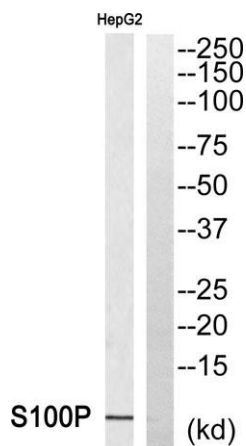
Overview

Product Name	S-100P rabbit pAb
Host species	Rabbit
Applications	WB;IHC;IF;ELISA
Species Cross-Reactivity	Human;Rat;Mouse;
Recommended dilutions	Western Blot: 1/500 - 1/2000. Immunohistochemistry: 1/100 - 1/300. ELISA: 1/20000. Not yet tested in other applications.
Immunogen	The antiserum was produced against synthesized peptide derived from human S100P. AA range:26-75
Specificity	S-100P Polyclonal Antibody detects endogenous levels of S-100P protein.
Formulation	Liquid in PBS containing 50% glycerol, 0.5% BSA and 0.02% sodium azide.
Storage	Store at -20°C. Avoid repeated freeze-thaw cycles.
Protein Name	Protein S100-P
Gene Name	S100P
Cellular localization	Nucleus. Cytoplasm. Cell projection, microvillus membrane. Colocalizes with S100PBP in the nucleus. Colocalizes with EZR in the microvilli in a calcium-dependent manner.
Purification	The antibody was affinity-purified from rabbit antiserum by affinity-chromatography using epitope-specific immunogen.
Clonality	Polyclonal
Concentration	1 mg/ml
Observed band	10kD
Human Gene ID	6286
Human Swiss-Prot Number	P25815
Alternative Names	S100P; S100E; Protein S100-P; Protein S100-E; S100 calcium-binding protein P
Background	The protein encoded by this gene is a member of the S100 family of proteins containing 2 EF-hand calcium-binding motifs. S100 proteins are localized





in the cytoplasm and/or nucleus of a wide range of cells, and involved in the regulation of a number of cellular processes such as cell cycle progression and differentiation. S100 genes include at least 13 members which are located as a cluster on chromosome 1q21; however, this gene is located at 4p16. This protein, in addition to binding Ca^{2+} , also binds Zn^{2+} and Mg^{2+} . This protein may play a role in the etiology of prostate cancer. [provided by RefSeq, Jul 2008],



Western blot analysis of S100P Antibody. The lane on the right is blocked with the S100P peptide.

Immunohistochemistry analysis of paraffin-embedded human lung carcinoma, using S100P Antibody. The lane on the right is blocked with the S100P peptide.

