



p70 S6 kinase β (phospho Ser423) rabbit pAb

Cat No.:ES7097

For research use only

Overview

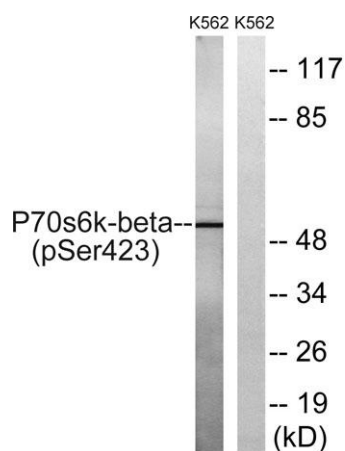
Product Name	p70 S6 kinase β (phospho Ser423) rabbit pAb
Host species	Rabbit
Applications	WB;ELISA
Species Cross-Reactivity	Human;Mouse
Recommended dilutions	Western Blot: 1/500 - 1/2000. ELISA: 1/5000. Not yet tested in other applications.
Immunogen	The antiserum was produced against synthesized peptide derived from human p70 S6 Kinase beta around the phosphorylation site of Ser423. AA range:389-438
Specificity	Phospho-p70 S6 kinase β (S423) Polyclonal Antibody detects endogenous levels of p70 S6 kinase β protein only when phosphorylated at S423.
Formulation	Liquid in PBS containing 50% glycerol, 0.5% BSA and 0.02% sodium azide.
Storage	Store at -20°C . Avoid repeated freeze-thaw cycles.
Protein Name	Ribosomal protein S6 kinase beta-2
Gene Name	RPS6KB2
Cellular localization	Cytoplasm. Nucleus.
Purification	The antibody was affinity-purified from rabbit antiserum by affinity-chromatography using epitope-specific immunogen.
Clonality	Polyclonal
Concentration	1 mg/ml
Observed band	53kD
Human Gene ID	6199
Human Swiss-Prot Number	Q9UBS0
Alternative Names	RPS6KB2; STK14B; Ribosomal protein S6 kinase beta-2; S6K-beta-2; S6K2; 70 kDa ribosomal protein S6 kinase 2; P70S6K2; p70-S6K 2; S6 kinase-related kinase; SRK; Serine/threonine-protein kinase 14B; p70 ribosomal S6 kinase beta; S6K-beta; p70





Background

ribosomal protein S6 kinase B2(RPS6KB2) Homo sapiens This gene encodes a member of the RSK (ribosomal S6 kinase) family of serine/threonine kinases. This kinase contains a kinase catalytic domain and phosphorylates the S6 ribosomal protein and eukaryotic translation initiation factor 4B (eIF4B). Phosphorylation of S6 leads to an increase in protein synthesis and cell proliferation. [provided by RefSeq, Jan 2015],



Western blot analysis of lysates from K562 cells treated with EGF 200ng/ml 5', using p70 S6 Kinase beta (Phospho-Ser423) Antibody. The lane on the right is blocked with the phospho peptide.

