



Ribosomal Protein S5 rabbit pAb

Cat No.:ES7075

For research use only

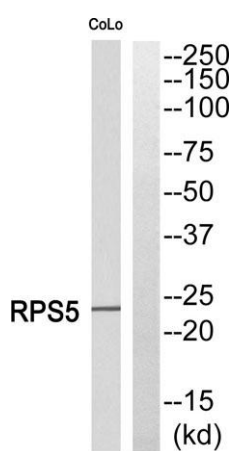
Overview

Product Name	Ribosomal Protein S5 rabbit pAb
Host species	Rabbit
Applications	WB;ELISA;IHC
Species Cross-Reactivity	Human;Mouse;Rat
Recommended dilutions	WB 1:500-2000;IHC-p 1:50-300; ELISA 2000-20000
Immunogen	Synthesized peptide derived from Ribosomal Protein S5 . at AA range: 60-140
Specificity	Ribosomal Protein S5 Polyclonal Antibody detects endogenous levels of Ribosomal Protein S5 protein.
Formulation	Liquid in PBS containing 50% glycerol, 0.5% BSA and 0.02% sodium azide.
Storage	Store at -20°C. Avoid repeated freeze-thaw cycles.
Protein Name	40S ribosomal protein S5
Gene Name	RPS5
Cellular localization	nucleoplasm,cytosol,focal adhesion,small ribosomal subunit,membrane,cytosolic small ribosomal subunit,intracellular ribonucleoprotein complex,extracellular matrix,extracellular exosome,
Purification	The antibody was affinity-purified from rabbit antiserum by affinity-chromatography using epitope-specific immunogen.
Clonality	Polyclonal
Concentration	1 mg/ml
Observed band	22kD
Human Gene ID	6193
Human Swiss-Prot Number	P46782
Alternative Names	RPS5; 40S ribosomal protein S5
Background	Ribosomes, the organelles that catalyze protein synthesis, consist of a small 40S subunit and a large 60S subunit. Together these subunits are composed of 4 RNA species and approximately 80 structurally distinct proteins. This gene encodes a ribosomal protein that is a component of the 40S subunit. The

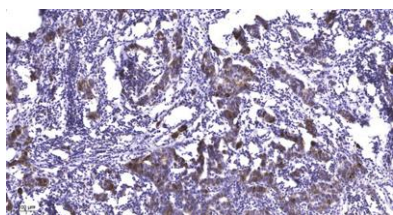




protein belongs to the S7P family of ribosomal proteins. It is located in the cytoplasm. Variable expression of this gene in colorectal cancers compared to adjacent normal tissues has been observed, although no correlation between the level of expression and the severity of the disease has been found. As is typical for genes encoding ribosomal proteins, there are multiple processed pseudogenes of this gene dispersed through the genome. [provided by RefSeq, Jul 2008],



Western blot analysis of RPS5 Antibody. The lane on the right is blocked with the RPS5 peptide.



Immunohistochemical analysis of paraffin-embedded human Breast cancer. 1, Antibody was diluted at 1:200(4° overnight). 2, Tris-EDTA,pH9.0 was used for antigen retrieval. 3,Secondary antibody was diluted at 1:200(room temperature, 45min).

