



# Ribosomal Protein L3L rabbit pAb

Cat No.:ES7063

For research use only

## Overview

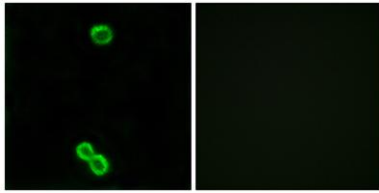
<b>Product Name</b>	Ribosomal Protein L3L rabbit pAb
<b>Host species</b>	Rabbit
<b>Applications</b>	IHC;IF;ELISA
<b>Species Cross-Reactivity</b>	Human;Rat;Mouse;
<b>Recommended dilutions</b>	Immunohistochemistry: 1/100 - 1/300. Immunofluorescence: 1/200 - 1/1000. ELISA: 1/40000. Not yet tested in other applications.
<b>Immunogen</b>	The antiserum was produced against synthesized peptide derived from human RPL3L. AA range:211-260
<b>Specificity</b>	Ribosomal Protein L3L Polyclonal Antibody detects endogenous levels of Ribosomal Protein L3L protein.
<b>Formulation</b>	Liquid in PBS containing 50% glycerol, 0.5% BSA and 0.02% sodium azide.
<b>Storage</b>	Store at -20°C. Avoid repeated freeze-thaw cycles.
<b>Protein Name</b>	60S ribosomal protein L3-like
<b>Gene Name</b>	RPL3L
<b>Cellular localization</b>	cytosol,ribosome,membrane,cytosolic large ribosomal subunit,
<b>Purification</b>	The antibody was affinity-purified from rabbit antiserum by affinity-chromatography using epitope-specific immunogen.
<b>Clonality</b>	Polyclonal
<b>Concentration</b>	1 mg/ml
<b>Observed band</b>	
<b>Human Gene ID</b>	6123
<b>Human Swiss-Prot Number</b>	Q92901
<b>Alternative Names</b>	RPL3L; 60S ribosomal protein L3-like
<b>Background</b>	This gene encodes a protein that shares sequence similarity with ribosomal protein L3. The protein belongs to the L3P family of ribosomal proteins. Unlike the ubiquitous expression of ribosomal protein genes, this gene has a tissue-specific pattern





of expression, with the highest levels of expression in skeletal muscle and heart. It is not currently known whether the encoded protein is a functional ribosomal protein or whether it has evolved a function that is independent of the ribosome. [provided by RefSeq, Jul 2008],

Immunofluorescence analysis of MCF7 cells, using RPL3L Antibody. The picture on the right is blocked with the synthesized peptide.



Immunohistochemistry analysis of paraffin-embedded human heart tissue, using RPL3L Antibody. The picture on the right is blocked with the synthesized peptide.

