



# Latherin rabbit pAb

Cat No.:ES7057

For research use only

## Overview

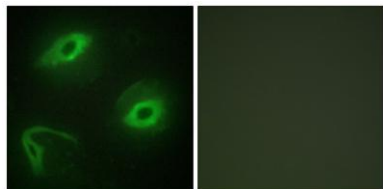
|                                 |   |
|---------------------------------|---|
| <b>Product Name</b>             | Latherin rabbit pAb   |
| <b>Host species</b>             | Rabbit  |
| <b>Applications</b>             | IHC;IF;ELISA  |
| <b>Species Cross-Reactivity</b> | Human;Rat;Mouse;  |
| <b>Recommended dilutions</b>    | Immunohistochemistry: 1/100 - 1/300.<br>Immunofluorescence: 1/200 - 1/1000. ELISA:<br>1/20000. Not yet tested in other applications.              |
| <b>Immunogen</b>                | The antiserum was produced against synthesized peptide derived from human LATH. AA range:71-120   |
| <b>Specificity</b>              | Latherin Polyclonal Antibody detects endogenous levels of Latherin protein.   |
| <b>Formulation</b>              | Liquid in PBS containing 50% glycerol, 0.5% BSA and 0.02% sodium azide.   |
| <b>Storage</b>                  | Store at -20°C. Avoid repeated freeze-thaw cycles.  |
| <b>Protein Name</b>             | Putative latherin   |
| <b>Gene Name</b>                | LATH  |
| <b>Cellular localization</b>    | Secreted.   |
| <b>Purification</b>             | The antibody was affinity-purified from rabbit antiserum by affinity-chromatography using epitope-specific immunogen.                             |
| <b>Clonality</b>                | Polyclonal  |
| <b>Concentration</b>            | 1 mg/ml   |
| <b>Observed band</b>            | 19kD  |
| <b>Human Gene ID</b>            | 607627  |
| <b>Human Swiss-Prot Number</b>  | Q86YQ2  |
| <b>Alternative Names</b>        | LATH; BASE; Putative latherin; Breast cancer and salivary gland-expressed protein   |
| <b>Background</b>               | LATH, also named as BASE, belongs to the BPI/LBP/Plunc superfamily and Plunc family. It is the major protein in sweat, has surfactant properties. |



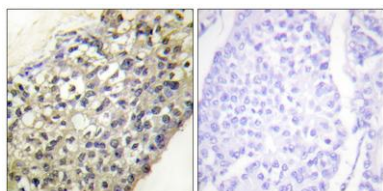


**ELK Biotechnology**

Immunofluorescence analysis of HeLa cells, using LATH Antibody. The picture on the right is blocked with the synthesized peptide.



Immunohistochemistry analysis of paraffin-embedded human breast carcinoma tissue, using LATH Antibody. The picture on the right is blocked with the synthesized peptide.



+86-27-59760950

[ELKbio@ELKbiotech.com](mailto:ELKbio@ELKbiotech.com)

[www.elkbiotech.com](http://www.elkbiotech.com)

23-2, No.388 Gaoxin 2nd Road, Wuhan East Lake Hi-tech Development Zone, Hubei, P.R.C