



Plakophilin 4 rabbit pAb

Cat No.:ES7051

For research use only

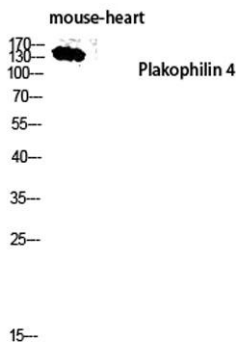
Overview

Product Name	Plakophilin 4 rabbit pAb
Host species	Rabbit
Applications	WB;IHC;IF;ELISA
Species Cross-Reactivity	Human;Mouse
Recommended dilutions	Western Blot: 1/500 - 1/2000. Immunohistochemistry: 1/100 - 1/300. ELISA: 1/5000. Not yet tested in other applications.
Immunogen	The antiserum was produced against synthesized peptide derived from human PKP4. AA range:185-234
Specificity	Plakophilin 4 Polyclonal Antibody detects endogenous levels of Plakophilin 4 protein.
Formulation	Liquid in PBS containing 50% glycerol, 0.5% BSA and 0.02% sodium azide.
Storage	Store at -20°C. Avoid repeated freeze-thaw cycles.
Protein Name	Plakophilin-4
Gene Name	PKP4
Cellular localization	Cell junction, desmosome . Cytoplasm, cytoskeleton, spindle . Midbody . Cell membrane ; Peripheral membrane protein . Associated with the pericentrosomal region in interphase and with spindle poles during mitosis. In anaphase, during chromosome segregation
Purification	The antibody was affinity-purified from rabbit antiserum by affinity-chromatography using epitope-specific immunogen.
Clonality	Polyclonal
Concentration	1 mg/ml
Observed band	130kD
Human Gene ID	604276
Human Swiss-Prot Number	Q99569
Alternative Names	PKP4; Plakophilin-4; p0071
Background	Armadillo-like proteins are characterized by a series

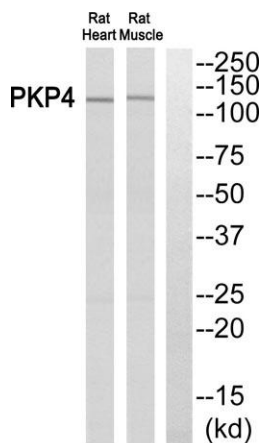




of armadillo repeats, first defined in the *Drosophila* 'armadillo' gene product, that are typically 42 to 45 amino acids in length. These proteins can be divided into subfamilies based on their number of repeats, their overall sequence similarity, and the dispersion of the repeats throughout their sequences. Members of the p120(ctn)/plakophilin subfamily of Armadillo-like proteins, including CTNND1, CTNND2, PKP1, PKP2, PKP4, and ARVCF. PKP4 may be a component of desmosomal plaque and other adhesion plaques and is thought to be involved in regulating junctional plaque organization and cadherin function. Multiple transcript variants encoding different isoforms have been found for this gene. [provided by RefSeq, Feb 2015],



Western blot analysis of mouse-heart lysis using Plakophilin 4 antibody. Antibody was diluted at 1:2000



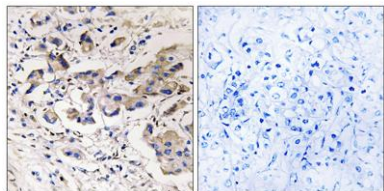
Western blot analysis of PKP4 Antibody. The lane on the right is blocked with the PKP4 peptide.





ELK Biotechnology

Immunohistochemistry analysis of paraffin-embedded human breast carcinoma, using PKP4 Antibody. The lane on the right is blocked with the PKP4 peptide.



+86-27-59760950

ELKbio@ELKbiotech.com

www.elkbiotech.com

23-2, No.388 Gaoxin 2nd Road, Wuhan East Lake Hi-tech Development Zone, Hubei, P.R.C