



GRK 1 (phospho Ser21) rabbit pAb

Cat No.:ES7047

For research use only

Overview

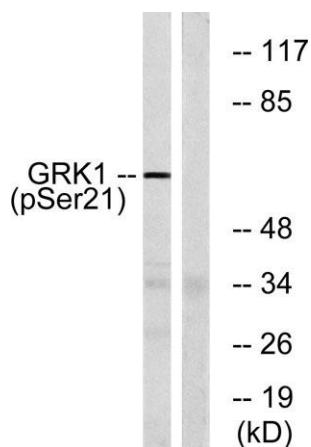
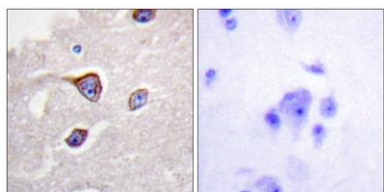
Product Name	GRK 1 (phospho Ser21) rabbit pAb
Host species	Rabbit
Applications	WB;IHC;IF;ELISA
Species Cross-Reactivity	Human;Mouse;Rat;Monkey
Recommended dilutions	Western Blot: 1/500 - 1/2000. Immunohistochemistry: 1/100 - 1/300. ELISA: 1/5000. Not yet tested in other applications.
Immunogen	The antiserum was produced against synthesized peptide derived from human GRK1 around the phosphorylation site of Ser21. AA range:6-55
Specificity	Phospho-GRK 1 (S21) Polyclonal Antibody detects endogenous levels of GRK 1 protein only when phosphorylated at S21.
Formulation	Liquid in PBS containing 50% glycerol, 0.5% BSA and 0.02% sodium azide.
Storage	Store at -20°C. Avoid repeated freeze-thaw cycles.
Protein Name	Rhodopsin kinase
Gene Name	GRK1
Cellular localization	Membrane ; Lipid-anchor . Cell projection, cilium, photoreceptor outer segment . Subcellular location is not affected by light or dark conditions. .
Purification	The antibody was affinity-purified from rabbit antiserum by affinity-chromatography using epitope-specific immunogen.
Clonality	Polyclonal
Concentration	1 mg/ml
Observed band	63kD
Human Gene ID	6011
Human Swiss-Prot Number	Q15835
Alternative Names	GRK1; RHOK; Rhodopsin kinase; RK; G protein-coupled receptor kinase 1
Background	This gene encodes a member of the guanine nucleotide-binding protein (G protein)-coupled





receptor kinase subfamily of the Ser/Thr protein kinase family. The protein phosphorylates rhodopsin and initiates its deactivation. Defects in GRK1 are known to cause Oguchi disease 2 (also known as stationary night blindness Oguchi type-2). [provided by RefSeq, Jul 2008],

Immunohistochemistry analysis of paraffin-embedded human brain, using GRK1 (Phospho-Ser21) Antibody. The picture on the right is blocked with the phospho peptide.



Western blot analysis of lysates from COS7 cells treated with TNF 20ng/ml 5', using GRK1 (Phospho-Ser21) Antibody. The lane on the right is blocked with the phospho peptide.

