



Bcl-x (phospho Thr47) rabbit pAb

Cat No.:ES7035

For research use only

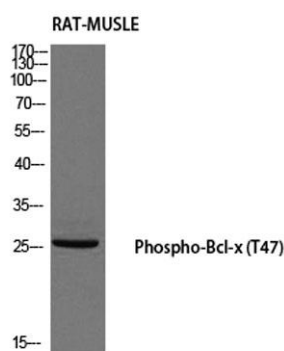
Overview

Product Name	Bcl-x (phospho Thr47) rabbit pAb
Host species	Rabbit
Applications	WB;IHC;IF;ELISA
Species Cross-Reactivity	Human;Mouse;Rat
Recommended dilutions	Western Blot: 1/500 - 1/2000. Immunohistochemistry: 1/100 - 1/300. Immunofluorescence: 1/200 - 1/1000. ELISA: 1/40000. Not yet tested in other applications.
Immunogen	The antiserum was produced against synthesized peptide derived from human BCL-XL around the phosphorylation site of Thr47. AA range:13-62
Specificity	Phospho-Bcl-x (T47) Polyclonal Antibody detects endogenous levels of Bcl-x protein only when phosphorylated at T47.
Formulation	Liquid in PBS containing 50% glycerol, 0.5% BSA and 0.02% sodium azide.
Storage	Store at -20°C. Avoid repeated freeze-thaw cycles.
Protein Name	Bcl-2-like protein 1
Gene Name	BCL2L1
Cellular localization	[Isoform Bcl-X(L)]: Mitochondrion inner membrane . Mitochondrion outer membrane . Mitochondrion matrix . Cytoplasmic vesicle, secretory vesicle, synaptic vesicle membrane . Cytoplasm, cytosol . Cytoplasm, cytoskeleton, microtubule organizing center, centrosome. Nucleus membrane ; Single-pass membrane protein ; Cytoplasmic side . After neuronal stimulation, translocates from cytosol to synaptic vesicle and mitochondrion membrane in a calmodulin-dependent manner (By similarity). Localizes to the centrosome when phosphorylated at Ser-49. .
Purification	The antibody was affinity-purified from rabbit antiserum by affinity-chromatography using



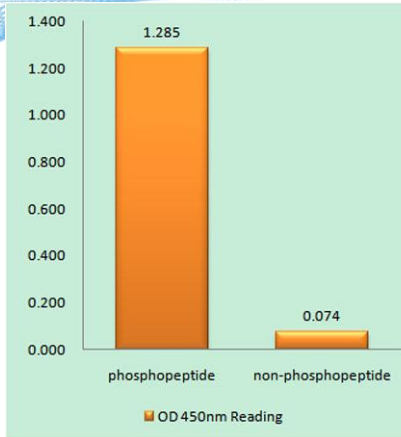


Clonality	epitope-specific immunogen. Polyclonal
Concentration	1 mg/ml
Observed band	30kD
Human Gene ID	598
Human Swiss-Prot Number	Q07817
Alternative Names	BCL2L1; BCL2L; BCLX; Bcl-2-like protein 1; Bcl2-L-1; Apoptosis regulator Bcl-X
Background	The protein encoded by this gene belongs to the BCL-2 protein family. BCL-2 family members form hetero- or homodimers and act as anti- or pro-apoptotic regulators that are involved in a wide variety of cellular activities. The proteins encoded by this gene are located at the outer mitochondrial membrane, and have been shown to regulate outer mitochondrial membrane channel (VDAC) opening. VDAC regulates mitochondrial membrane potential, and thus controls the production of reactive oxygen species and release of cytochrome C by mitochondria, both of which are the potent inducers of cell apoptosis. Alternative splicing results in multiple transcript variants encoding two different isoforms. The longer isoform acts as an apoptotic inhibitor and the shorter isoform acts as an apoptotic activator. [provided by RefSeq, Dec 2015],



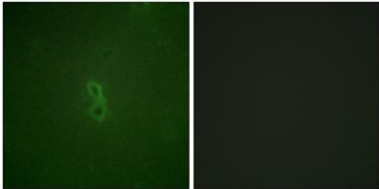
Western blot analysis of RAT-MUSCLE using Phospho-Bcl-x (T47) antibody. Antibody was diluted at 1:500





Enzyme-Linked Immunosorbent Assay (Phospho-ELISA) for Immunogen Phosphopeptide (Phospho-left) and Non-Phosphopeptide (Phospho-right), using BCL-XL (Phospho-Thr47) Antibody

Immunofluorescence analysis of NIH/3T3 cells, using BCL-XL (Phospho-Thr47) Antibody. The picture on the right is blocked with the phospho peptide.



Immunohistochemistry analysis of paraffin-embedded human lung carcinoma, using BCL-XL (Phospho-Thr47) Antibody. The picture on the right is blocked with the phospho peptide.

