



c-Rel (phospho Ser503) rabbit pAb

Cat No.:ES7022

For research use only

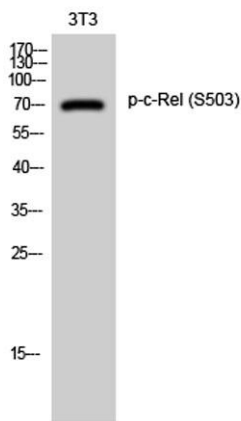
Overview

Product Name	c-Rel (phospho Ser503) rabbit pAb
Host species	Rabbit
Applications	WB;IHC;IF;ELISA
Species Cross-Reactivity	Human;Rat;Mouse;
Recommended dilutions	Western Blot: 1/500 - 1/2000. Immunohistochemistry: 1/100 - 1/300. ELISA: 1/5000. Not yet tested in other applications.
Immunogen	The antiserum was produced against synthesized peptide derived from human Rel around the phosphorylation site of Ser503. AA range:470-519
Specificity	Phospho-c-Rel (S503) Polyclonal Antibody detects endogenous levels of c-Rel protein only when phosphorylated at S503.
Formulation	Liquid in PBS containing 50% glycerol, 0.5% BSA and 0.02% sodium azide.
Storage	Store at -20°C. Avoid repeated freeze-thaw cycles.
Protein Name	Proto-oncogene c-Rel
Gene Name	REL
Cellular localization	Nucleus .
Purification	The antibody was affinity-purified from rabbit antiserum by affinity-chromatography using epitope-specific immunogen.
Clonality	Polyclonal
Concentration	1 mg/ml
Observed band	
Human Gene ID	5966
Human Swiss-Prot Number	Q04864
Alternative Names	REL; Proto-oncogene c-Rel
Background	This gene encodes a protein that belongs to the Rel homology domain/immunoglobulin-like fold, plexin, transcription factor (RHD/IPT) family. Members of this family regulate genes involved in apoptosis, inflammation, the immune response, and oncogenic



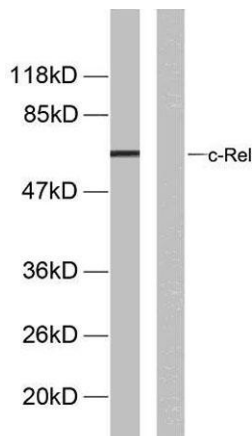
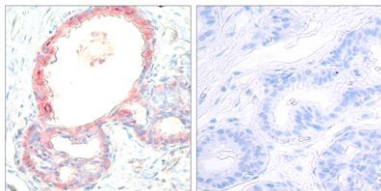


processes. This proto-oncogene plays a role in the survival and proliferation of B lymphocytes. Mutation or amplification of this gene is associated with B-cell lymphomas, including Hodgkin's lymphoma. Single nucleotide polymorphisms in this gene are associated with susceptibility to ulcerative colitis and rheumatoid arthritis. Alternative splicing results in multiple transcript variants encoding different isoforms. [provided by RefSeq, Apr 2014],



Western Blot analysis of 3T3 cells using Phospho-c-Rel (S503) Polyclonal Antibody diluted at 1:1000 cells nucleus extracted by Minute TM Cytoplasmic and Nuclear Fractionation kit (SC-003, Inventbiotech, MN, USA).

Immunohistochemistry analysis of paraffin-embedded human breast carcinoma, using Rel (Phospho-Ser503) Antibody. The picture on the right is blocked with the phospho peptide.



Western blot analysis of lysates from MDA-MB-435 cells, using Rel (Phospho-Ser503) Antibody. The lane on the right is blocked with the phospho peptide.





ELK Biotechnology



+86-27-59760950

ELKbio@ELKbiotech.com

www.elkbiotech.com

23-2, No.388 Gaoxin 2nd Road,Wuhan East Lake Hi-tech Development Zone, Hubei , P.R.C