



Bcl-2 (phospho Thr69) rabbit pAb

Cat No.:ES7019

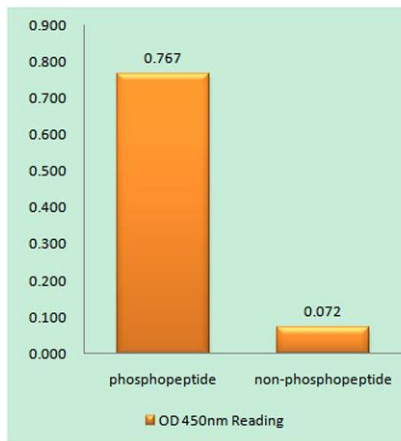
For research use only

Overview

| | |
|---------------------------------|---|
| Product Name | Bcl-2 (phospho Thr69) rabbit pAb |
| Host species | Rabbit |
| Applications | IHC;IF;ELISA |
| Species Cross-Reactivity | Human;Rat;Mouse; |
| Recommended dilutions | Immunohistochemistry: 1/100 - 1/300. Immunofluorescence: 1/200 - 1/1000. ELISA: 1/20000. Not yet tested in other applications. |
| Immunogen | The antiserum was produced against synthesized peptide derived from human BCL-2 around the phosphorylation site of Thr69. AA range:46-95 |
| Specificity | Phospho-Bcl-2 (T69) Polyclonal Antibody detects endogenous levels of Bcl-2 protein only when phosphorylated at T69. |
| Formulation | Liquid in PBS containing 50% glycerol, 0.5% BSA and 0.02% sodium azide. |
| Storage | Store at -20°C. Avoid repeated freeze-thaw cycles. |
| Protein Name | Apoptosis regulator Bcl-2 |
| Gene Name | BCL2 |
| Cellular localization | Mitochondrion outer membrane ; Single-pass membrane protein . Nucleus membrane ; Single-pass membrane protein . Endoplasmic reticulum membrane ; Single-pass membrane protein . Cytoplasm . |
| Purification | The antibody was affinity-purified from rabbit antiserum by affinity-chromatography using epitope-specific immunogen. |
| Clonality | Polyclonal |
| Concentration | 1 mg/ml |
| Observed band | |
| Human Gene ID | 596 |
| Human Swiss-Prot Number | P10415 |
| Alternative Names | BCL2; Apoptosis regulator Bcl-2 |
| Background | BCL2, apoptosis regulator(BCL2) Homo sapiens |

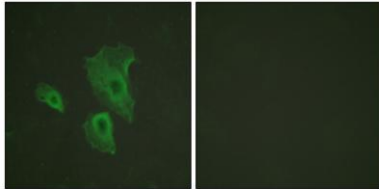


This gene encodes an integral outer mitochondrial membrane protein that blocks the apoptotic death of some cells such as lymphocytes. Constitutive expression of BCL2, such as in the case of translocation of BCL2 to Ig heavy chain locus, is thought to be the cause of follicular lymphoma. Alternative splicing results in multiple transcript variants. [provided by RefSeq, Feb 2016],



Enzyme-Linked Immunosorbent Assay (Phospho-ELISA) for Immunogen Phosphopeptide (Phospho-left) and Non-Phosphopeptide (Phospho-right), using BCL-2 (Phospho-Thr69) Antibody

Immunofluorescence analysis of HeLa cells, using BCL-2 (Phospho-Thr69) Antibody. The picture on the right is blocked with the phospho peptide.



Immunohistochemistry analysis of paraffin-embedded human colon carcinoma, using BCL-2 (Phospho-Thr69) Antibody. The picture on the right is blocked with the phospho peptide.

