



# Rb (phospho Ser811) rabbit pAb

Cat No.:ES6994

For research use only

## Overview

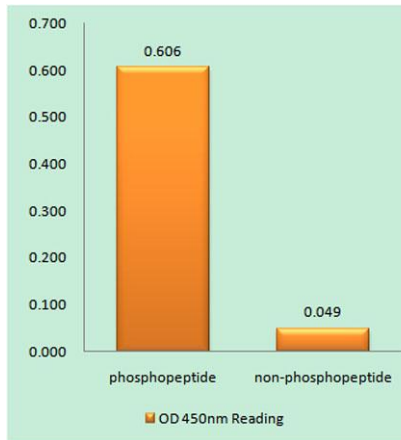
<b>Product Name</b>	Rb (phospho Ser811) rabbit pAb
<b>Host species</b>	Rabbit
<b>Applications</b>	WB;IHC;IF;ELISA
<b>Species Cross-Reactivity</b>	Human;Mouse;Rat
<b>Recommended dilutions</b>	Western Blot: 1/500 - 1/2000. Immunohistochemistry: 1/100 - 1/300. Immunofluorescence: 1/200 - 1/1000. ELISA: 1/10000. Not yet tested in other applications.
<b>Immunogen</b>	The antiserum was produced against synthesized peptide derived from human Retinoblastoma around the phosphorylation site of Ser811. AA range:771-820
<b>Specificity</b>	Phospho-Rb (S811) Polyclonal Antibody detects endogenous levels of Rb protein only when phosphorylated at S811.
<b>Formulation</b>	Liquid in PBS containing 50% glycerol, 0.5% BSA and 0.02% sodium azide.
<b>Storage</b>	Store at -20°C. Avoid repeated freeze-thaw cycles.
<b>Protein Name</b>	Retinoblastoma-associated protein
<b>Gene Name</b>	RB1
<b>Cellular localization</b>	Nucleus . During keratinocyte differentiation, acetylation by KAT2B/PCAF is required for nuclear localization. .
<b>Purification</b>	The antibody was affinity-purified from rabbit antiserum by affinity-chromatography using epitope-specific immunogen.
<b>Clonality</b>	Polyclonal
<b>Concentration</b>	1 mg/ml
<b>Observed band</b>	106kD
<b>Human Gene ID</b>	5925
<b>Human Swiss-Prot Number</b>	P06400
<b>Alternative Names</b>	RB1; Retinoblastoma-associated protein; p105-Rb; pRb; Rb; pp110





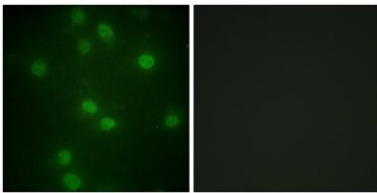
## Background

The protein encoded by this gene is a negative regulator of the cell cycle and was the first tumor suppressor gene found. The encoded protein also stabilizes constitutive heterochromatin to maintain the overall chromatin structure. The active, hypophosphorylated form of the protein binds transcription factor E2F1. Defects in this gene are a cause of childhood cancer retinoblastoma (RB), bladder cancer, and osteogenic sarcoma. [provided by RefSeq, Jul 2008],



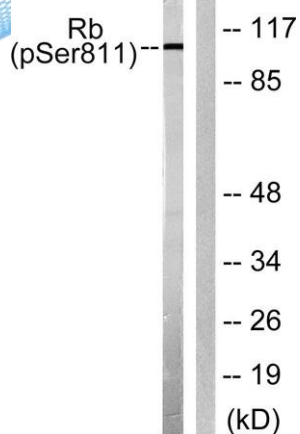
Enzyme-Linked Immunosorbent Assay (Phospho-ELISA) for Immunogen Phosphopeptide (Phospho-left) and Non-Phosphopeptide (Phospho-right), using Retinoblastoma (Phospho-Ser811) Antibody

Immunofluorescence analysis of HUVEC cells, using Retinoblastoma (Phospho-Ser811) Antibody. The picture on the right is blocked with the phospho peptide.

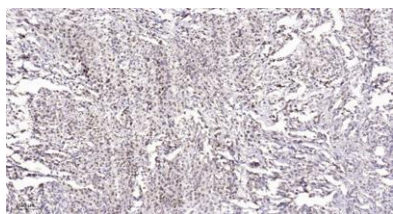




**ELK Biotechnology**



Western blot analysis of lysates from K562 cells, using Retinoblastoma (Phospho-Ser811) Antibody. The lane on the right is blocked with the phospho peptide.



Immunohistochemical analysis of paraffin-embedded human Small intestinal stromal tumor. 1, Tris-EDTA,pH9.0 was used for antigen retrieval. 2 Antibody was diluted at 1:200(4° overnight).3,Secondary antibody was diluted at 1:200(room temperature, 45min).



+86-27-59760950

ELKbio@ELKbiotech.com

www.elkbiotech.com

23-2, No.388 Gaoxin 2nd Road,Wuhan East Lake Hi-tech Development Zone, Hubei , P.R.C