



RAR α (phospho Ser77) rabbit pAb

Cat No.:ES6991

For research use only

Overview

Product Name	RAR α (phospho Ser77) rabbit pAb
Host species	Rabbit
Applications	WB;IHC;IF;ELISA
Species Cross-Reactivity	Human;Mouse;Rat
Recommended dilutions	Western Blot: 1/500 - 1/2000. Immunohistochemistry: 1/100 - 1/300. ELISA: 1/5000. Not yet tested in other applications.
Immunogen	The antiserum was produced against synthesized peptide derived from human Retinoic Acid Receptor alpha around the phosphorylation site of Ser77. AA range:46-95
Specificity	Phospho-RAR α (S77) Polyclonal Antibody detects endogenous levels of RAR α protein only when phosphorylated at S77.
Formulation	Liquid in PBS containing 50% glycerol, 0.5% BSA and 0.02% sodium azide.
Storage	Store at -20°C. Avoid repeated freeze-thaw cycles.
Protein Name	Retinoic acid receptor alpha
Gene Name	RARA
Cellular localization	Nucleus . Cytoplasm . Nuclear localization depends on ligand binding, phosphorylation and sumoylation (PubMed:19850744). Translocation to the nucleus in the absence of ligand is dependent on activation of PKC and the downstream MAPK phosphorylation (By si
Purification	The antibody was affinity-purified from rabbit antiserum by affinity-chromatography using epitope-specific immunogen.
Clonality	Polyclonal
Concentration	1 mg/ml
Observed band	45kD
Human Gene ID	5914
Human Swiss-Prot Number	P10276



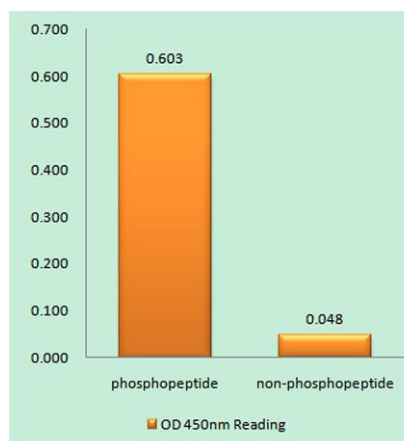


Alternative Names

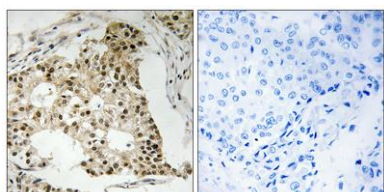
RARA; NR1B1; Retinoic acid receptor alpha; RAR-alpha; Nuclear receptor subfamily 1 group B member 1

Background

This gene represents a nuclear retinoic acid receptor. The encoded protein, retinoic acid receptor alpha, regulates transcription in a ligand-dependent manner. This gene has been implicated in regulation of development, differentiation, apoptosis, granulopoiesis, and transcription of clock genes. Translocations between this locus and several other loci have been associated with acute promyelocytic leukemia. Alternatively spliced transcript variants have been found for this locus.[provided by RefSeq, Sep 2010],

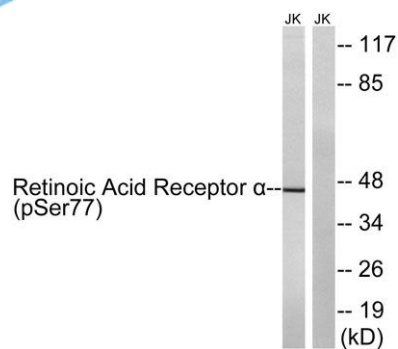


Enzyme-Linked Immunosorbent Assay (Phospho-ELISA) for Immunogen Phosphopeptide (Phospho-left) and Non-Phosphopeptide (Phospho-right), using Retinoic Acid Receptor alpha (Phospho-Ser77) Antibody



Immunohistochemistry analysis of paraffin-embedded human breast carcinoma, using Retinoic Acid Receptor alpha (Phospho-Ser77) Antibody. The picture on the right is blocked with the phospho peptide.





Western blot analysis of lysates from Jurkat cells treated with PMA 125ng/ml 30' and Jurkat cells treated with insulin 0.01U/ml 15', using Retinoic Acid Receptor alpha (Phospho-Ser77) Antibody. The lane on the right is blocked with the phospho peptide.

