



Raf-1 (phospho Tyr341) rabbit pAb

Cat No.:ES6980

For research use only

Overview

Product Name	Raf-1 (phospho Tyr341) rabbit pAb
Host species	Rabbit
Applications	WB;IHC;IF;ELISA
Species Cross-Reactivity	Human;Mouse;Rat
Recommended dilutions	Western Blot: 1/500 - 1/2000. Immunohistochemistry: 1/100 - 1/300. ELISA: 1/10000. Not yet tested in other applications.
Immunogen	The antiserum was produced against synthesized peptide derived from human C-RAF around the phosphorylation site of Tyr341. AA range:311-360
Specificity	Phospho-Raf-1 (Y341) Polyclonal Antibody detects endogenous levels of Raf-1 protein only when phosphorylated at Y341.
Formulation	Liquid in PBS containing 50% glycerol, 0.5% BSA and 0.02% sodium azide.
Storage	Store at -20°C. Avoid repeated freeze-thaw cycles.
Protein Name	RAF proto-oncogene serine/threonine-protein kinase
Gene Name	RAF1
Cellular localization	Cytoplasm. Cell membrane. Mitochondrion. Nucleus. Colocalizes with RGS14 and BRAF in both the cytoplasm and membranes. Phosphorylation at Ser-259 impairs its membrane accumulation. Recruited to the cell membrane by the active Ras protein. Phosphorylation
Purification	The antibody was affinity-purified from rabbit antiserum by affinity-chromatography using epitope-specific immunogen.
Clonality	Polyclonal
Concentration	1 mg/ml
Observed band	73kD
Human Gene ID	5894
Human Swiss-Prot Number	P04049



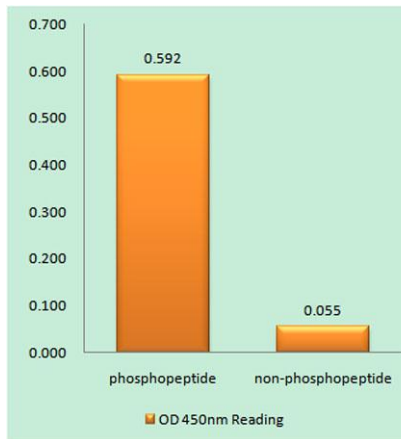


Alternative Names

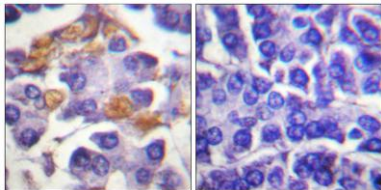
RAF1; RAF; RAF proto-oncogene serine/threonine-protein kinase; Proto-oncogene c-RAF; cRaf; Raf-1

Background

This gene is the cellular homolog of viral raf gene (v-raf). The encoded protein is a MAP kinase kinase kinase (MAP3K), which functions downstream of the Ras family of membrane associated GTPases to which it binds directly. Once activated, the cellular RAF1 protein can phosphorylate to activate the dual specificity protein kinases MEK1 and MEK2, which in turn phosphorylate to activate the serine/threonine specific protein kinases, ERK1 and ERK2. Activated ERKs are pleiotropic effectors of cell physiology and play an important role in the control of gene expression involved in the cell division cycle, apoptosis, cell differentiation and cell migration. Mutations in this gene are associated with Noonan syndrome 5 and LEOPARD syndrome 2. [provided by RefSeq, Jul 2008],



Enzyme-Linked Immunosorbent Assay (Phospho-ELISA) for Immunogen Phosphopeptide (Phospho-left) and Non-Phosphopeptide (Phospho-right), using C-RAF (Phospho-Tyr341) Antibody

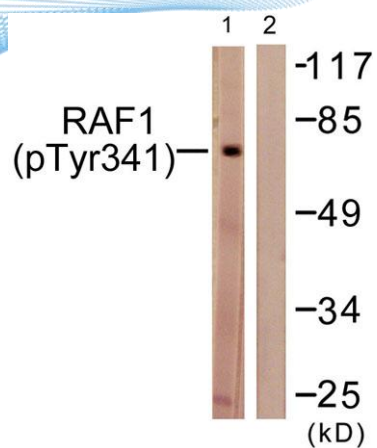


Immunohistochemistry analysis of paraffin-embedded human pancreas, using C-RAF (Phospho-Tyr341) Antibody. The picture on the right is blocked with the phospho peptide.





ELK Biotechnology



Western blot analysis of lysates from Jurkat cells treated with Paclitaxel 1uM 24h, using C-RAF (Phospho-Tyr341) Antibody. The lane on the right is blocked with the phospho peptide.



+86-27-59760950

ELKbio@ELKbiotech.com

www.elkbiotech.com

23-2, No.388 Gaoxin 2nd Road,Wuhan East Lake Hi-tech Development Zone, Hubei , P.R.C