



Rab 6A rabbit pAb

Cat No.:ES6964

For research use only

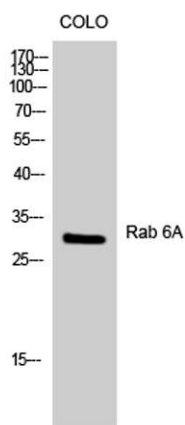
Overview

Product Name	Rab 6A rabbit pAb
Host species	Rabbit
Applications	WB;IHC;IF;ELISA
Species Cross-Reactivity	Human;Mouse;Rat
Recommended dilutions	Western Blot: 1/500 - 1/2000. Immunohistochemistry: 1/100 - 1/300. ELISA: 1/20000. Not yet tested in other applications.
Immunogen	The antiserum was produced against synthesized peptide derived from human RAB6A. AA range:113-162
Specificity	Rab 6A Polyclonal Antibody detects endogenous levels of Rab 6A protein.
Formulation	Liquid in PBS containing 50% glycerol, 0.5% BSA and 0.02% sodium azide.
Storage	Store at -20°C. Avoid repeated freeze-thaw cycles.
Protein Name	Ras-related protein Rab-6A
Gene Name	RAB6A
Cellular localization	Golgi apparatus membrane ; Lipid-anchor . BICD2 facilitates its targeting to Golgi apparatus membrane. . ; [Isoform 1]: Golgi apparatus membrane ; Lipid-anchor . ; [Isoform 2]: Golgi apparatus membrane ; Lipid-anchor .
Purification	The antibody was affinity-purified from rabbit antiserum by affinity-chromatography using epitope-specific immunogen.
Clonality	Polyclonal
Concentration	1 mg/ml
Observed band	24kD
Human Gene ID	5870
Human Swiss-Prot Number	P20340
Alternative Names	RAB6A; RAB6; Ras-related protein Rab-6A; Rab-6
Background	This gene encodes a member of the RAB family, which belongs to the small GTPase superfamily.

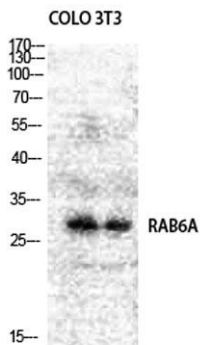




GTPases of the RAB family bind to various effectors to regulate the targeting and fusion of transport carriers to acceptor compartments. This protein is located at the Golgi apparatus, which regulates trafficking in both a retrograde (from early endosomes and Golgi to the endoplasmic reticulum) and an anterograde (from the Golgi to the plasma membrane) directions. Myosin II is an effector of this protein in these processes. This protein is also involved in assembly of human cytomegalovirus (HCMV) by interacting with the cellular protein Bicaudal D1, which interacts with the HCMV virion tegument protein, pp150. Multiple alternatively spliced transcript variants encoding different isoforms have been identified. [provided by RefSeq, Aug 2011],



Western Blot analysis of COLO cells using Rab 6A
Polyclonal Antibody diluted at 1:1000

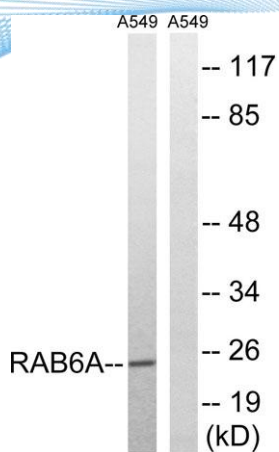


Western Blot analysis of COLO NIH-3T3 cells using Rab 6A
Polyclonal Antibody diluted at 1:1000

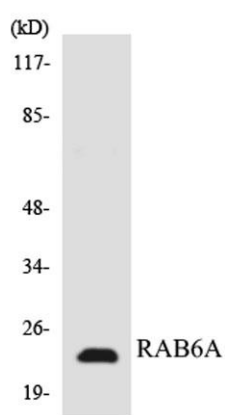




ELK Biotechnology



Western blot analysis of lysates from A549 cells, using RAB6A Antibody. The lane on the right is blocked with the synthesized peptide.



Western blot analysis of the lysates from HT-29 cells using RAB6A antibody.



+86-27-59760950

ELKbio@ELKbiotech.com

www.elkbiotech.com

23-2, No.388 Gaoxin 2nd Road, Wuhan East Lake Hi-tech Development Zone, Hubei, P.R.C