



MYL7 rabbit pAb

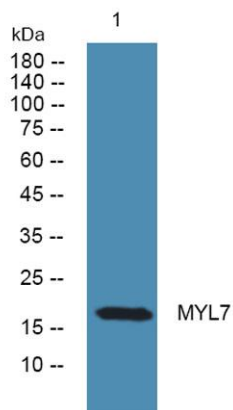
Cat No.:ES6961

For research use only

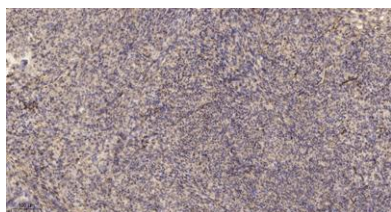
Overview

| | |
|---------------------------------|--|
| Product Name | MYL7 rabbit pAb |
| Host species | Rabbit |
| Applications | WB;IHC |
| Species Cross-Reactivity | Human;Mouse;Rat;Monkey |
| Recommended dilutions | WB 1:500-2000;IHC-p 1:50-300 |
| Immunogen | The antiserum was produced against synthesized peptide derived from human MYL7. AA range:111-160 |
| Specificity | MYL7 Polyclonal Antibody detects endogenous levels of MYL7 protein. |
| Formulation | Liquid in PBS containing 50% glycerol, 0.5% BSA and 0.02% sodium azide. |
| Storage | Store at -20°C. Avoid repeated freeze-thaw cycles. |
| Protein Name | Myosin regulatory light chain 2 atrial isoform |
| Gene Name | MYL7 |
| Cellular localization | cytosol,myosin complex,A band,dendritic spine, |
| Purification | The antibody was affinity-purified from rabbit antiserum by affinity-chromatography using epitope-specific immunogen. |
| Clonality | Polyclonal |
| Concentration | 1 mg/ml |
| Observed band | 18kD |
| Human Gene ID | 58498 |
| Human Swiss-Prot Number | Q01449 |
| Alternative Names | MYL7; MYL2A; MYLC2A; Myosin regulatory light chain 2; atrial isoform; MLC-2a; MLC2a; Myosin light chain 2a; Myosin regulatory light chain 7 |
| Background | miscellaneous:This chain binds calcium.,similarity:Contains 3 EF-hand domains.,subunit:Myosin is a hexamer of 2 heavy chains and 4 light chains.,tissue specificity:Predominantly expressed in adult atrial muscle., |





Western blot analysis of lysates from SH-SY5Y cells, primary antibody was diluted at 1:1000, 4° over night



Immunohistochemical analysis of paraffin-embedded human uterus. 1, Antibody was diluted at 1:200(4° overnight). 2, Tris-EDTA,pH9.0 was used for antigen retrieval. 3,Secondary antibody was diluted at 1:200(room temperature, 45min).

