



BET5 rabbit pAb

Cat No.:ES6959

For research use only

Overview

Product Name	BET5 rabbit pAb
Host species	Rabbit
Applications	IHC;IF;ELISA
Species Cross-Reactivity	Human;Mouse;Rat
Recommended dilutions	Immunohistochemistry: 1/100 - 1/300. ELISA: 1/5000. Not yet tested in other applications.
Immunogen	The antiserum was produced against synthesized peptide derived from human TRAPPC1. AA range:10-59
Specificity	BET5 Polyclonal Antibody detects endogenous levels of BET5 protein.
Formulation	Liquid in PBS containing 50% glycerol, 0.5% BSA and 0.02% sodium azide.
Storage	Store at -20°C. Avoid repeated freeze-thaw cycles.
Protein Name	Trafficking protein particle complex subunit 1
Gene Name	TRAPPC1
Cellular localization	Golgi apparatus, cis-Golgi network . Endoplasmic reticulum .
Purification	The antibody was affinity-purified from rabbit antiserum by affinity-chromatography using epitope-specific immunogen.
Clonality	Polyclonal
Concentration	1 mg/ml
Observed band	
Human Gene ID	58485
Human Swiss-Prot Number	Q9Y5R8
Alternative Names	TRAPPC1; BET5; MUM2; Trafficking protein particle complex subunit 1; BET5 homolog; Multiple myeloma protein 2; MUM-2
Background	trafficking protein particle complex 1(TRAPPC1) Homo sapiens This gene product plays a role in vesicular transport of proteins to the Golgi apparatus from the endoplasmic reticulum. The

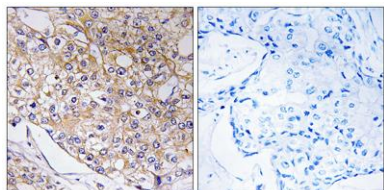




ELK Biotechnology

encoded protein is a component of the multisubunit transport protein particle (TRAPP) complex. Alternative splicing results in multiple transcript variants.[provided by RefSeq, Oct 2009],

Immunohistochemistry analysis of paraffin-embedded human breast carcinoma tissue, using TRAPPC1 Antibody. The picture on the right is blocked with the synthesized peptide.



+86-27-59760950

ELKbio@ELKbiotech.com

www.elkbiotech.com

23-2, No.388 Gaoxin 2nd Road,Wuhan East Lake Hi-tech Development Zone, Hubei , P.R.C