



# Paxillin rabbit pAb

Cat No.:ES6955

For research use only

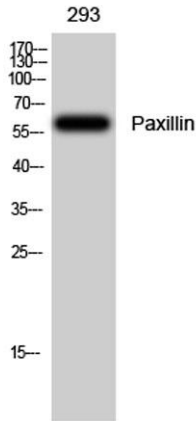
## Overview

<b>Product Name</b>	Paxillin rabbit pAb
<b>Host species</b>	Rabbit
<b>Applications</b>	WB;ELISA
<b>Species Cross-Reactivity</b>	Human;Mouse;Rat
<b>Recommended dilutions</b>	Western Blot: 1/500 - 1/2000. ELISA: 1/10000. Not yet tested in other applications.
<b>Immunogen</b>	The antiserum was produced against synthesized peptide derived from human Paxillin. AA range:144-193
<b>Specificity</b>	Paxillin Polyclonal Antibody detects endogenous levels of Paxillin protein.
<b>Formulation</b>	Liquid in PBS containing 50% glycerol, 0.5% BSA and 0.02% sodium azide.
<b>Storage</b>	Store at -20°C. Avoid repeated freeze-thaw cycles.
<b>Protein Name</b>	Paxillin
<b>Gene Name</b>	PXN
<b>Cellular localization</b>	Cytoplasm, cytoskeleton . Cell junction, focal adhesion . Cytoplasm, cell cortex . Colocalizes with integrins at the cell periphery. Colocalize with PXN to membrane ruffles and the leading edge of migrating cells (PubMed:23128389). .
<b>Purification</b>	The antibody was affinity-purified from rabbit antiserum by affinity-chromatography using epitope-specific immunogen.
<b>Clonality</b>	Polyclonal
<b>Concentration</b>	1 mg/ml
<b>Observed band</b>	65kD
<b>Human Gene ID</b>	5829
<b>Human Swiss-Prot Number</b>	P49023
<b>Alternative Names</b>	PXN; Paxillin
<b>Background</b>	This gene encodes a cytoskeletal protein involved in actin-membrane attachment at sites of cell adhesion to the extracellular matrix (focal adhesion).

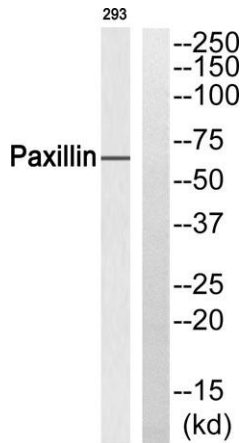




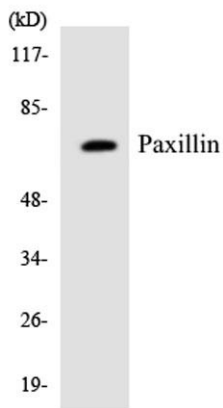
Alternatively spliced transcript variants encoding different isoforms have been described for this gene. These isoforms exhibit different expression pattern, and have different biochemical, as well as physiological properties (PMID:9054445). [provided by RefSeq, Aug 2011],



Western Blot analysis of 293 cells using Paxillin Polyclonal Antibody



Western blot analysis of Paxillin Antibody. The lane on the right is blocked with the Paxillin peptide.



Western blot analysis of the lysates from RAW264.7 cells using Paxillin antibody.

