



DBC-1 rabbit pAb

Cat No.:ES6935

For research use only

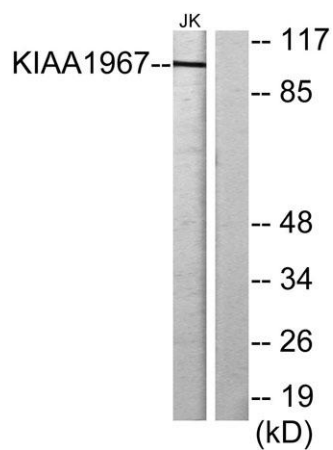
Overview

Product Name	DBC-1 rabbit pAb
Host species	Rabbit
Applications	WB;IHC;IF;ELISA
Species Cross-Reactivity	Human;Rat;Mouse;
Recommended dilutions	Western Blot: 1/500 - 1/2000. ELISA: 1/20000. Not yet tested in other applications.
Immunogen	The antiserum was produced against synthesized peptide derived from human KIAA1967. AA range:431-480
Specificity	DBC-1 Polyclonal Antibody detects endogenous levels of DBC-1 protein.
Formulation	Liquid in PBS containing 50% glycerol, 0.5% BSA and 0.02% sodium azide.
Storage	Store at -20°C. Avoid repeated freeze-thaw cycles.
Protein Name	DBIRD complex subunit KIAA1967
Gene Name	KIAA1967
Cellular localization	Nucleus . Cytoplasm . Cytoplasm, cytoskeleton, spindle . Recruited to chromatin, post-UV irradiation. Sequestered to the cytoplasm in the presence of MCC. Translocated to the cytoplasm during UV-induced apoptosis. .
Purification	The antibody was affinity-purified from rabbit antiserum by affinity-chromatography using epitope-specific immunogen.
Clonality	Polyclonal
Concentration	1 mg/ml
Observed band	102kD
Human Gene ID	57805
Human Swiss-Prot Number	Q8N163
Alternative Names	KIAA1967; DBC1; DBIRD complex subunit KIAA1967; Deleted in breast cancer gene 1 protein; DBC-1; DBC.1; p30 DBC
Background	tissue specificity:Expressed ubiquitously in normal

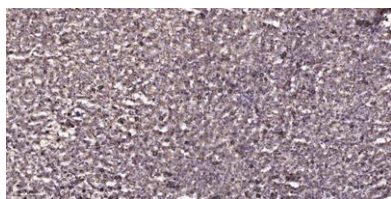




tissues. Expressed in 84 to 100% of neoplastic breast, lung, and colon tissues.,



Western blot analysis of lysates from Jurkat cells, using KIAA1967 Antibody. The lane on the right is blocked with the synthesized peptide.



Immunohistochemical analysis of paraffin-embedded human liver cancer. 1, Antibody was diluted at 1:200(4° overnight). 2, Tris-EDTA,pH9.0 was used for antigen retrieval. 3,Secondary antibody was diluted at 1:200(room temperature, 45min).

