



MARCH4 rabbit pAb

Cat No.:ES6921

For research use only

Overview

Product Name	MARCH4 rabbit pAb
Host species	Rabbit
Applications	IHC;IF;ELISA
Species Cross-Reactivity	Human;Mouse
Recommended dilutions	Immunohistochemistry: 1/100 - 1/300. ELISA: 1/40000. Not yet tested in other applications.
Immunogen	The antiserum was produced against synthesized peptide derived from human MARCH4. AA range:301-350
Specificity	MARCH4 Polyclonal Antibody detects endogenous levels of 40606 protein.
Formulation	Liquid in PBS containing 50% glycerol, 0.5% BSA and 0.02% sodium azide.
Storage	Store at -20°C. Avoid repeated freeze-thaw cycles.
Protein Name	E3 ubiquitin-protein ligase MARCH4
Gene Name	MARCH4
Cellular localization	Golgi apparatus membrane ; Multi-pass membrane protein .
Purification	The antibody was affinity-purified from rabbit antiserum by affinity-chromatography using epitope-specific immunogen.
Clonality	Polyclonal
Concentration	1 mg/ml
Observed band	
Human Gene ID	57574
Human Swiss-Prot Number	Q9P2E8
Alternative Names	MARCH4; KIAA1399; RNF174; E3 ubiquitin-protein ligase MARCH4; Membrane-associated RING finger protein 4; Membrane-associated RING-CH protein IV; MARCH-IV; RING finger protein 174
Background	MARCH4 is a member of the MARCH family of membrane-bound E3 ubiquitin ligases (EC 6.3.2.19). MARCH enzymes add ubiquitin (see MIM 191339) to

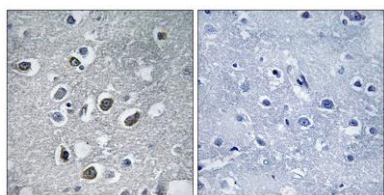




ELK Biotechnology

target lysines in substrate proteins, thereby signaling their vesicular transport between membrane compartments. MARCH4 reduces surface accumulation of several membrane glycoproteins by directing them to the endosomal compartment (Bartee et al., 2004 [PubMed 14722266]).[supplied by OMIM, Apr 2010],

Immunohistochemistry analysis of paraffin-embedded human brain tissue, using MARCH4 Antibody. The picture on the right is blocked with the synthesized peptide.



+86-27-59760950

ELKbio@ELKbiotech.com

www.elkbiotech.com

23-2, No.388 Gaoxin 2nd Road,Wuhan East Lake Hi-tech Development Zone, Hubei , P.R.C