



ARRDC3 rabbit pAb

Cat No.:ES6920

For research use only

Overview

Product Name	ARRDC3 rabbit pAb
Host species	Rabbit
Applications	WB;IHC;IF;ELISA
Species Cross-Reactivity	Human;Mouse;Rat
Recommended dilutions	Western Blot: 1/500 - 1/2000. Immunohistochemistry: 1/100 - 1/300. ELISA: 1/20000. Not yet tested in other applications.
Immunogen	The antiserum was produced against synthesized peptide derived from human ARRDC3. AA range:365-414
Specificity	ARRDC3 Polyclonal Antibody detects endogenous levels of ARRDC3 protein.
Formulation	Liquid in PBS containing 50% glycerol, 0.5% BSA and 0.02% sodium azide.
Storage	Store at -20°C. Avoid repeated freeze-thaw cycles.
Protein Name	Arrestin domain-containing protein 3
Gene Name	ARRDC3
Cellular localization	Cytoplasm . Cell membrane ; Peripheral membrane protein ; Cytoplasmic side . Lysosome . Endosome . Early endosome . Associated with plasma membrane, as well as with endosomes and lysosomes during endocytosis (PubMed:16269462, PubMed:23208550, PubMed:20559
Purification	The antibody was affinity-purified from rabbit antiserum by affinity-chromatography using epitope-specific immunogen.
Clonality	Polyclonal
Concentration	1 mg/ml
Observed band	46kD
Human Gene ID	57561
Human Swiss-Prot Number	Q96B67
Alternative Names	ARRDC3; KIAA1376; Arrestin domain-containing protein 3; TBP-2-like inducible membrane protein;



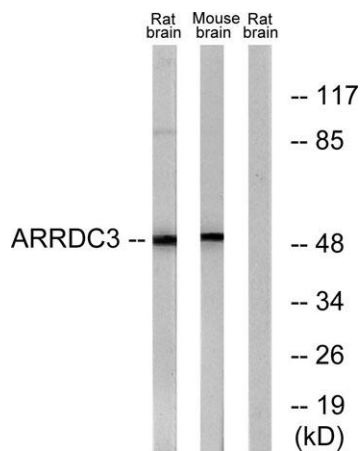


Background

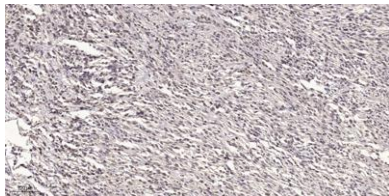
TLIMP

This gene encodes a member of the arrestin family of proteins, which regulate G protein-mediated signaling. The encoded protein is thought to act as a regulator of breast cancer growth and progression by binding to a phosphorylated form of integrin beta4, a tumor-related antigen, targeting the integrin for internalization and degradation.

[provided by RefSeq, Jul 2016],



Western blot analysis of lysates from rat brain and mouse brain cells, using ARRDC3 Antibody. The lane on the right is blocked with the synthesized peptide.



Immunohistochemical analysis of paraffin-embedded human small intestinal carcinoma tissue. 1,primary Antibody was diluted at 1:200(4° overnight). 2, Sodium citrate pH 6.0 was used for antigen retrieval(>98°C,20min). 3,Secondary antibody was diluted at 1:2

