



NEDL2 rabbit pAb

Cat No.:ES6915

For research use only

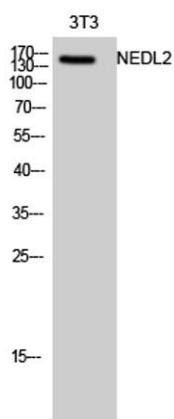
Overview

Product Name	NEDL2 rabbit pAb
Host species	Rabbit
Applications	WB;ELISA
Species Cross-Reactivity	Human;Rat;Mouse;
Recommended dilutions	Western Blot: 1/500 - 1/2000. ELISA: 1/10000. Not yet tested in other applications.
Immunogen	The antiserum was produced against synthesized peptide derived from human HECW2. AA range:481-530
Specificity	NEDL2 Polyclonal Antibody detects endogenous levels of NEDL2 protein.
Formulation	Liquid in PBS containing 50% glycerol, 0.5% BSA and 0.02% sodium azide.
Storage	Store at -20°C. Avoid repeated freeze-thaw cycles.
Protein Name	E3 ubiquitin-protein ligase HECW2
Gene Name	HECW2
Cellular localization	Cytoplasm . Cytoplasm, cytoskeleton, spindle .
Purification	The antibody was affinity-purified from rabbit antiserum by affinity-chromatography using epitope-specific immunogen.
Clonality	Polyclonal
Concentration	1 mg/ml
Observed band	140-150kD
Human Gene ID	57520
Human Swiss-Prot Number	Q9P2P5
Alternative Names	HECW2; KIAA1301; NEDL2; E3 ubiquitin-protein ligase HECW2; HECT; C2 and WW domain-containing protein 2; NEDD4-like E3 ubiquitin-protein ligase 2
Background	function:E3 ubiquitin-protein ligase that mediates ubiquitination of TP73. Acts to stabilize TP73 and enhance activation of transcription by TP73.,pathway:Protein modification; protein

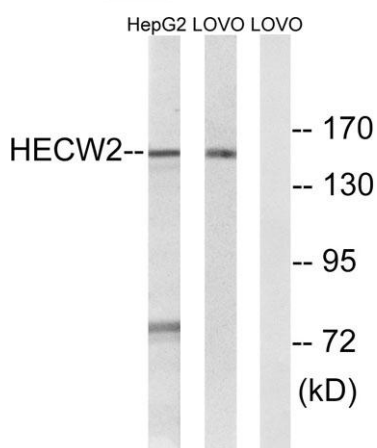




ubiquitination.,similarity:Contains 1 C2 domain.,similarity:Contains 1 HECT (E6AP-type E3 ubiquitin-protein ligase) domain.,similarity:Contains 2 WW domains.,subunit:Interacts with TP73.,tissue specificity:Predominantly expressed in adult brain, lung and heart.,



Western Blot analysis of 3T3 cells using NEDL2 Polyclonal Antibody diluted at 1:1000



Western blot analysis of lysates from LOVO and HepG2 cells, using HECW2 Antibody. The lane on the right is blocked with the synthesized peptide.

