



# NDRG2 rabbit pAb

Cat No.:ES6896

For research use only

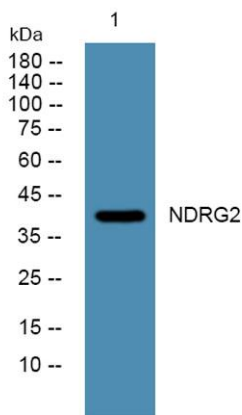
## Overview

<b>Product Name</b>	NDRG2 rabbit pAb
<b>Host species</b>	Rabbit
<b>Applications</b>	IHC;IF;WB;ELISA
<b>Species Cross-Reactivity</b>	Human;Mouse;Rat
<b>Recommended dilutions</b>	WB 1:500-2000 Immunohistochemistry: 1/100 - 1/300. ELISA: 1/40000. Not yet tested in other applications.
<b>Immunogen</b>	Synthesized peptide derived from NDRG2 . at AA range: 10-90
<b>Specificity</b>	NDRG2 Polyclonal Antibody detects endogenous levels of NDRG2 protein.
<b>Formulation</b>	Liquid in PBS containing 50% glycerol, 0.5% BSA and 0.02% sodium azide.
<b>Storage</b>	Store at -20°C. Avoid repeated freeze-thaw cycles.
<b>Protein Name</b>	Protein NDRG2
<b>Gene Name</b>	NDRG2
<b>Cellular localization</b>	Cytoplasm. Cytoplasm, perinuclear region. Cell projection, growth cone . In neurons, seems to concentrate at axonal growth cone. Perinuclear in neurons (By similarity). .
<b>Purification</b>	The antibody was affinity-purified from rabbit antiserum by affinity-chromatography using epitope-specific immunogen.
<b>Clonality</b>	Polyclonal
<b>Concentration</b>	1 mg/ml
<b>Observed band</b>	40kD
<b>Human Gene ID</b>	57447
<b>Human Swiss-Prot Number</b>	Q9UN36
<b>Alternative Names</b>	NDRG2; KIAA1248; SYLD; Protein NDRG2; N-myc downstream-regulated gene 2 protein; Protein Syld709613
<b>Background</b>	This gene is a member of the N-myc downregulated gene family which belongs to the alpha/beta

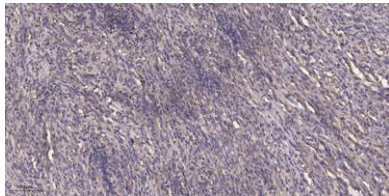




hydrolase superfamily. The protein encoded by this gene is a cytoplasmic protein that may play a role in neurite outgrowth. This gene may be involved in glioblastoma carcinogenesis. Several alternatively spliced transcript variants of this gene have been described, but the full-length nature of some of these variants has not been determined. [provided by RefSeq, Jul 2008],



Western blot analysis of lysates from U2OS cells, primary antibody was diluted at 1:1000, 4° over night



Immunohistochemical analysis of paraffin-embedded human Colon cancer. 1, Antibody was diluted at 1:200(4° overnight). 2, Tris-EDTA,pH9.0 was used for antigen retrieval. 3,Secondary antibody was diluted at 1:200(room temperature, 45min).

