



CYP20A1 rabbit pAb

Cat No.:ES6893

For research use only

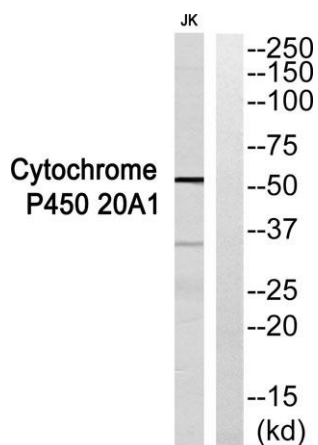
Overview

Product Name	CYP20A1 rabbit pAb
Host species	Rabbit
Applications	WB;ELISA
Species Cross-Reactivity	Human;Rat;Mouse;
Recommended dilutions	Western Blot: 1/500 - 1/2000. ELISA: 1/40000. Not yet tested in other applications.
Immunogen	The antiserum was produced against synthesized peptide derived from human Cytochrome P450 20A1. AA range:191-240
Specificity	CYP20A1 Polyclonal Antibody detects endogenous levels of CYP20A1 protein.
Formulation	Liquid in PBS containing 50% glycerol, 0.5% BSA and 0.02% sodium azide.
Storage	Store at -20°C. Avoid repeated freeze-thaw cycles.
Protein Name	Cytochrome P450 20A1
Gene Name	CYP20A1
Cellular localization	Membrane ; Single-pass membrane protein .
Purification	The antibody was affinity-purified from rabbit antiserum by affinity-chromatography using epitope-specific immunogen.
Clonality	Polyclonal
Concentration	1 mg/ml
Observed band	53kD
Human Gene ID	57404
Human Swiss-Prot Number	Q6UW02
Alternative Names	CYP20A1; Cytochrome P450 20A1
Background	cytochrome P450 family 20 subfamily A member 1(CYP20A1) Homo sapiens This gene encodes a member of the cytochrome P450 superfamily of enzymes. The cytochrome P450 proteins are monooxygenases that catalyze many reactions involved in drug metabolism and synthesis of cholesterol, steroids and other lipids. This protein

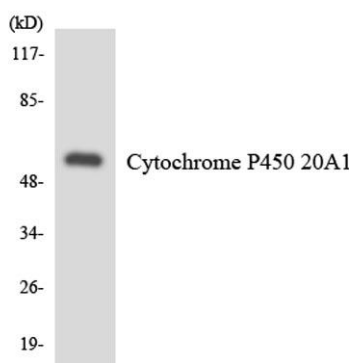




lacks one amino acid of the conserved heme binding site. It also lacks the conserved I-helix motif AGX(D,E)T, suggesting that its substrate may carry its own oxygen. [provided by RefSeq, Jul 2008],



Western blot analysis of Cytochrome P450 20A1 Antibody. The lane on the right is blocked with the Cytochrome P450 20A1 peptide.



Western blot analysis of the lysates from HUVEC cells using Cytochrome P450 20A1 antibody.

