



## EP2 rabbit pAb

Cat No.:ES6887

For research use only

### Overview

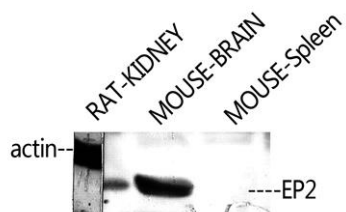
<b>Product Name</b>	EP2 rabbit pAb
<b>Host species</b>	Rabbit
<b>Applications</b>	WB;IF;ELISA
<b>Species Cross-Reactivity</b>	Human;Mouse;Rat
<b>Recommended dilutions</b>	Western Blot: 1/500 - 1/2000. Immunofluorescence: 1/200 - 1/1000. ELISA: 1/10000. Not yet tested in other applications.
<b>Immunogen</b>	The antiserum was produced against synthesized peptide derived from human PE2R2. AA range:261-310
<b>Specificity</b>	EP2 Polyclonal Antibody detects endogenous levels of EP2 protein.
<b>Formulation</b>	Liquid in PBS containing 50% glycerol, 0.5% BSA and 0.02% sodium azide.
<b>Storage</b>	Store at -20°C. Avoid repeated freeze-thaw cycles.
<b>Protein Name</b>	Prostaglandin E2 receptor EP2 subtype
<b>Gene Name</b>	PTGER2
<b>Cellular localization</b>	Cell membrane; Multi-pass membrane protein.
<b>Purification</b>	The antibody was affinity-purified from rabbit antiserum by affinity-chromatography using epitope-specific immunogen.
<b>Clonality</b>	Polyclonal
<b>Concentration</b>	1 mg/ml
<b>Observed band</b>	40kD
<b>Human Gene ID</b>	5732
<b>Human Swiss-Prot Number</b>	P43116
<b>Alternative Names</b>	PTGER2; Prostaglandin E2 receptor EP2 subtype; PGE receptor EP2 subtype; PGE2 receptor EP2 subtype; Prostanoid EP2 receptor
<b>Background</b>	This gene encodes a receptor for prostaglandin E2, a metabolite of arachidonic acid which has different biologic activities in a wide range of tissues. Mutations in this gene are associated with



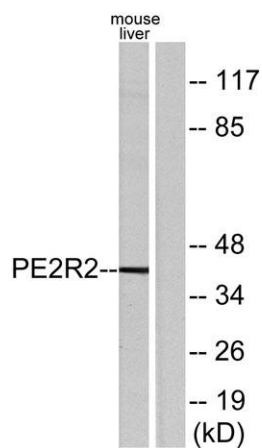


aspirin-induced susceptibility to asthma. [provided by RefSeq, Oct 2009],

Western Blot analysis of RAT-KIDNEY MOUSE-BRAIN MOUSE-HEART using EP2 Polyclonal Antibody. Antibody was diluted at 1:2000



Western blot analysis of lysates from mouse liver, using PE2R2 Antibody. The lane on the right is blocked with the synthesized peptide.



Western blot analysis of the lysates from 293 cells using PE2R2 antibody.

