



Nicalin rabbit pAb

Cat No.:ES6862

For research use only

Overview

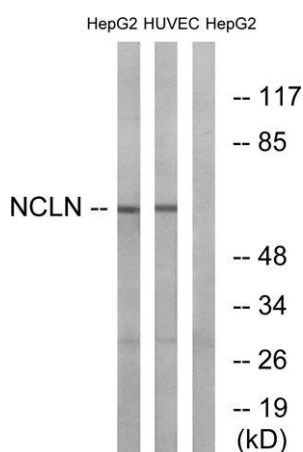
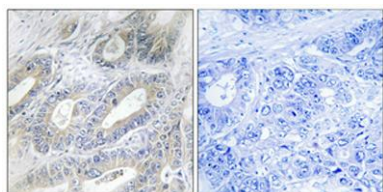
Product Name	Nicalin rabbit pAb
Host species	Rabbit
Applications	WB;IHC;IF;ELISA
Species Cross-Reactivity	Human;Mouse;Rat
Recommended dilutions	Western Blot: 1/500 - 1/2000. Immunohistochemistry: 1/100 - 1/300. ELISA: 1/40000. Not yet tested in other applications.
Immunogen	The antiserum was produced against synthesized peptide derived from human NCLN. AA range:474-523
Specificity	Nicalin Polyclonal Antibody detects endogenous levels of Nicalin protein.
Formulation	Liquid in PBS containing 50% glycerol, 0.5% BSA and 0.02% sodium azide.
Storage	Store at -20°C. Avoid repeated freeze-thaw cycles.
Protein Name	Nicalin
Gene Name	NCLN
Cellular localization	Endoplasmic reticulum membrane ; Single-pass membrane protein .
Purification	The antibody was affinity-purified from rabbit antiserum by affinity-chromatography using epitope-specific immunogen.
Clonality	Polyclonal
Concentration	1 mg/ml
Observed band	63kD
Human Gene ID	56926
Human Swiss-Prot Number	Q969V3
Alternative Names	NCLN; Nicalin; Nicastrin-like protein
Background	function:May antagonize Nodal signaling and subsequent organization of axial structures during mesodermal patterning.,similarity:Belongs to the nicastrin family.,subunit:Interacts with NOMO2. Due to the strong similarity between NOMO1, NOMO2





and NOMO3, it probably also interacts with NOMO1 and NOMO3. Participates in a large protein complex, which is not related to the gamma-secretase complex.,tissue specificity:Highly expressed in pancreas and skeletal muscle and, at lower levels, in heart.,

Immunohistochemical analysis of paraffin-embedded Human colon cancer. Antibody was diluted at 1:100(4° overnight). High-pressure and temperature Tris-EDTA,pH8.0 was used for antigen retrieval. Negative contrl (right) obtained from antibody was pre-absorb



Western blot analysis of lysates from HepG2 and HUVEC cells, using NCLN Antibody. The lane on the right is blocked with the synthesized peptide.

