



A1Up rabbit pAb

Cat No.:ES6860

For research use only

Overview

Product Name	A1Up rabbit pAb
Host species	Rabbit
Applications	WB;IHC;IF;ELISA
Species Cross-Reactivity	Human;Mouse
Recommended dilutions	Western Blot: 1/500 - 1/2000. Immunohistochemistry: 1/100 - 1/300. ELISA: 1/40000. Not yet tested in other applications.
Immunogen	The antiserum was produced against synthesized peptide derived from human UBQLN4. AA range:201-250
Specificity	A1Up Polyclonal Antibody detects endogenous levels of A1Up protein.
Formulation	Liquid in PBS containing 50% glycerol, 0.5% BSA and 0.02% sodium azide.
Storage	Store at -20°C. Avoid repeated freeze-thaw cycles.
Protein Name	Ubiquilin-4
Gene Name	UBQLN4
Cellular localization	Nucleus . Cytoplasm . Chromosome . Endoplasmic reticulum . Cytoplasm, perinuclear region . Cytoplasmic vesicle, autophagosome . Colocalizes with the proteasome, both in nucleus and cytoplasm (PubMed:15280365). Exported from the nucleus following interacti
Purification	The antibody was affinity-purified from rabbit antiserum by affinity-chromatography using epitope-specific immunogen.
Clonality	Polyclonal
Concentration	1 mg/ml
Observed band	54kD
Human Gene ID	56893
Human Swiss-Prot Number	Q9NRR5
Alternative Names	UBQLN4; C1orf6; CIP75; UBIN; Ubiquilin-4; Ataxin-1 interacting ubiquitin-like protein; A1Up; Ataxin-1

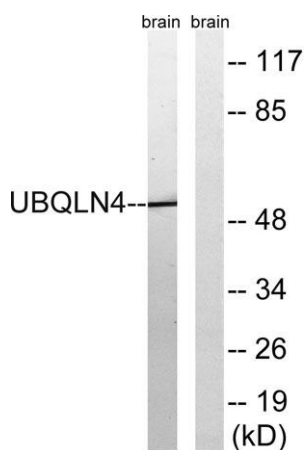
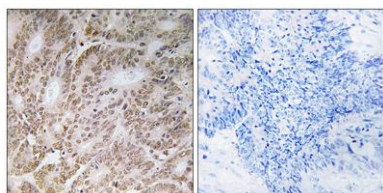




Background

ubiquitin-like-interacting protein A1U;
Connexin43-interacting protein of 75 kDa; CIP75
PTM:Phosphorylated upon DNA damage, probably
by ATM or ATR.,similarity:Contains 1 UBA
domain.,similarity:Contains 1 ubiquitin-like
domain.,subcellular location:May associate with the
endoplasmic reticulum.,subunit:Homodimer. Binds
SCA1. Binds signal sequences of proteins that are
targeted to the endoplasmic reticulum.,tissue
specificity:Highly expressed in pancreas, kidney,
skeletal muscle, heart and throughout the brain, and
at lower levels in placenta, lung and liver.,

Immunohistochemistry analysis of paraffin-embedded
human colon carcinoma tissue, using UBQLN4 Antibody.
The picture on the right is blocked with the synthesized
peptide.



Western blot analysis of lysates from mouse brain, using
UBQLN4 Antibody. The lane on the right is blocked with
the synthesized peptide.

