



DNA pol ϵ 4 rabbit pAb

Cat No.:ES6851

For research use only

Overview

Product Name	DNA pol ϵ 4 rabbit pAb
Host species	Rabbit
Applications	IHC;IF;ELISA
Species Cross-Reactivity	Human;Mouse
Recommended dilutions	Immunohistochemistry: 1/100 - 1/300. ELISA: 1/40000. Not yet tested in other applications.
Immunogen	The antiserum was produced against synthesized peptide derived from human POLE4. AA range:61-110
Specificity	DNA pol ϵ 4 Polyclonal Antibody detects endogenous levels of DNA pol ϵ 4 protein.
Formulation	Liquid in PBS containing 50% glycerol, 0.5% BSA and 0.02% sodium azide.
Storage	Store at -20°C. Avoid repeated freeze-thaw cycles.
Protein Name	DNA polymerase epsilon subunit 4
Gene Name	POLE4
Cellular localization	Nucleus .
Purification	The antibody was affinity-purified from rabbit antiserum by affinity-chromatography using epitope-specific immunogen.
Clonality	Polyclonal
Concentration	1 mg/ml
Observed band	12kD
Human Gene ID	56655
Human Swiss-Prot Number	Q9NR33
Alternative Names	POLE4; DNA polymerase epsilon subunit 4; DNA polymerase II subunit 4; DNA polymerase epsilon subunit p12
Background	POLE4 is a histone-fold protein that interacts with other histone-fold proteins to bind DNA in a sequence-independent manner. These histone-fold protein dimers combine within larger enzymatic complexes for DNA transcription, replication, and

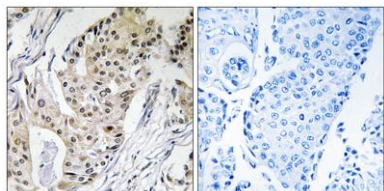




ELK Biotechnology

packaging.[supplied by OMIM, Apr 2004],

Immunohistochemistry analysis of paraffin-embedded human breast carcinoma tissue, using POLE4 Antibody. The picture on the right is blocked with the synthesized peptide.



+86-27-59760950

ELKbio@ELKbiotech.com

www.elkbiotech.com

23-2, No.388 Gaoxin 2nd Road,Wuhan East Lake Hi-tech Development Zone, Hubei , P.R.C