



PRKX rabbit pAb

Cat No.:ES6841

For research use only

Overview

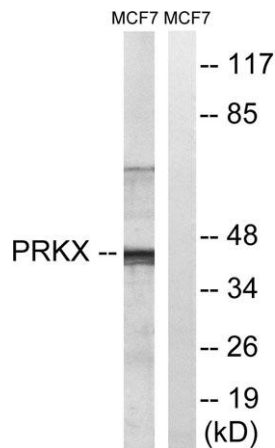
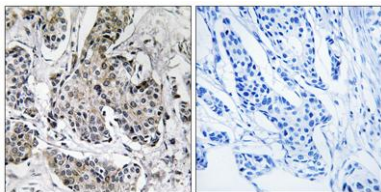
Product Name	PRKX rabbit pAb
Host species	Rabbit
Applications	WB;IHC;IF;ELISA
Species Cross-Reactivity	Human;Mouse;Rat
Recommended dilutions	Western Blot: 1/500 - 1/2000. Immunohistochemistry: 1/100 - 1/300. ELISA: 1/20000. Not yet tested in other applications.
Immunogen	The antiserum was produced against synthesized peptide derived from human PRKX. AA range:251-300
Specificity	PRKX Polyclonal Antibody detects endogenous levels of PRKX protein.
Formulation	Liquid in PBS containing 50% glycerol, 0.5% BSA and 0.02% sodium azide.
Storage	Store at -20°C. Avoid repeated freeze-thaw cycles.
Protein Name	cAMP-dependent protein kinase catalytic subunit PRKX
Gene Name	PRKX
Cellular localization	Cytoplasm. Nucleus. cAMP induces nuclear translocation.
Purification	The antibody was affinity-purified from rabbit antiserum by affinity-chromatography using epitope-specific immunogen.
Clonality	Polyclonal
Concentration	1 mg/ml
Observed band	41kD
Human Gene ID	5613
Human Swiss-Prot Number	P51817
Alternative Names	PRKX; PKX1; cAMP-dependent protein kinase catalytic subunit PRKX; PrKX; Protein kinase X; Protein kinase X-linked; Serine/threonine-protein kinase PRKX; Protein kinase PKX1
Background	This gene encodes a serine threonine protein kinase





that has similarity to the catalytic subunit of cyclic AMP dependent protein kinases. The encoded protein is developmentally regulated and may be involved in renal epithelial morphogenesis. This protein may also be involved in macrophage and granulocyte maturation. Abnormal recombination between this gene and a related pseudogene on chromosome Y is a frequent cause of sex reversal disorder in XX males and XY females. Pseudogenes of this gene are found on chromosomes X, 15 and Y. [provided by RefSeq, Feb 2010],

Immunohistochemistry analysis of paraffin-embedded human breast carcinoma tissue, using PRKX Antibody. The picture on the right is blocked with the synthesized peptide.

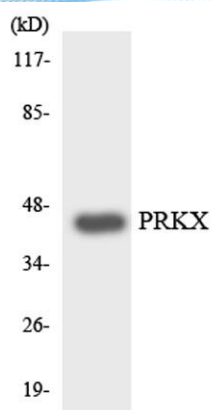


Western blot analysis of lysates from MCF-7 cells, using PRKX Antibody. The lane on the right is blocked with the synthesized peptide.





ELK Biotechnology



Western blot analysis of the lysates from HepG2 cells using PRKX antibody.



+86-27-59760950

ELKbio@ELKbiotech.com

www.elkbiotech.com

23-2, No.388 Gaoxin 2nd Road,Wuhan East Lake Hi-tech Development Zone, Hubei , P.R.C