



# PKR (phospho Thr446) rabbit pAb

Cat No.:ES6836

For research use only

## Overview

<b>Product Name</b>	PKR (phospho Thr446) rabbit pAb
<b>Host species</b>	Rabbit
<b>Applications</b>	WB;ELISA
<b>Species Cross-Reactivity</b>	Human;Rat;Mouse;
<b>Recommended dilutions</b>	Western Blot: 1/500 - 1/2000. ELISA: 1/10000. Not yet tested in other applications.
<b>Immunogen</b>	The antiserum was produced against synthesized peptide derived from human PKR around the phosphorylation site of Thr446. AA range:413-462
<b>Specificity</b>	Phospho-PKR (T446) Polyclonal Antibody detects endogenous levels of PKR protein only when phosphorylated at T446.
<b>Formulation</b>	Liquid in PBS containing 50% glycerol, 0.5% BSA and 0.02% sodium azide.
<b>Storage</b>	Store at -20°C. Avoid repeated freeze-thaw cycles.
<b>Protein Name</b>	Interferon-induced double-stranded RNA-activated protein kinase
<b>Gene Name</b>	EIF2AK2
<b>Cellular localization</b>	Cytoplasm . Nucleus . Cytoplasm, perinuclear region . Nuclear localization is elevated in acute leukemia, myelodysplastic syndrome (MDS), melanoma, breast, colon, prostate and lung cancer patient samples or cell lines as well as neurocytes from advanced C
<b>Purification</b>	The antibody was affinity-purified from rabbit antiserum by affinity-chromatography using epitope-specific immunogen.
<b>Clonality</b>	Polyclonal
<b>Concentration</b>	1 mg/ml
<b>Observed band</b>	62kD
<b>Human Gene ID</b>	5610
<b>Human Swiss-Prot Number</b>	P19525
<b>Alternative Names</b>	EIF2AK2; PKR; PRKR; Interferon-induced;

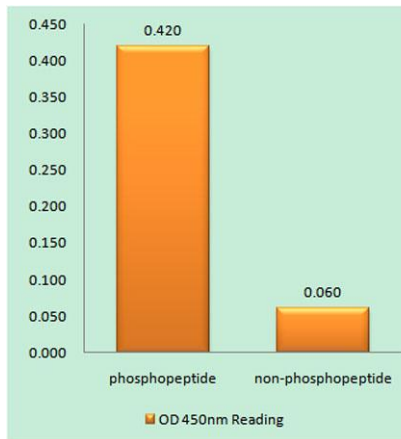




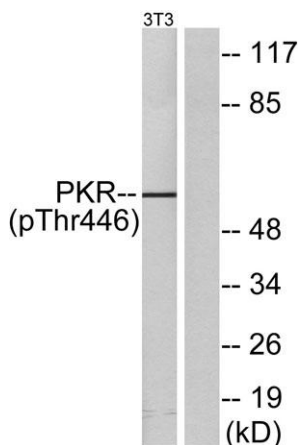
## Background

double-stranded RNA-activated protein kinase;  
Eukaryotic translation initiation factor 2-alpha  
kinase 2; eIF-2A protein kinase 2;  
Interferon-inducible RNA-dependent protein kinase;  
P1/eIF-2A protein k

The protein encoded by this gene is a serine/threonine protein kinase that is activated by autophosphorylation after binding to dsRNA. The activated form of the encoded protein can phosphorylate translation initiation factor EIF2S1, which in turn inhibits protein synthesis. This protein is also activated by manganese ions and heparin. Three transcript variants encoding two different isoforms have been found for this gene. [provided by RefSeq, Oct 2011],



Enzyme-Linked Immunosorbent Assay (Phospho-ELISA) for Immunogen Phosphopeptide (Phospho-left) and Non-Phosphopeptide (Phospho-right), using PKR (Phospho-Thr446) Antibody



Western blot analysis of lysates from NIH/3T3 cells treated with IFN 2500U/ml 30', using PKR (Phospho-Thr446) Antibody. The lane on the right is blocked with the phospho peptide.

