



DNA-PKCS (phospho Thr2647) rabbit pAb

Cat No.:ES6803

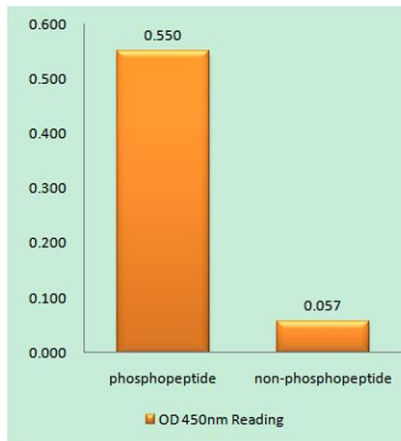
For research use only

Overview

Product Name	DNA-PKCS (phospho Thr2647) rabbit pAb
Host species	Rabbit
Applications	WB;IHC;IF;ELISA
Species Cross-Reactivity	Human;Rat;Mouse;
Recommended dilutions	WB 1:500-2000 ,Immunohistochemistry: 1/100 - 1/300. Immunofluorescence: 1/200 - 1/1000. ELISA: 1/10000. Not yet tested in other applications.
Immunogen	The antiserum was produced against synthesized peptide derived from human DNA-PK around the phosphorylation site of Thr2647. AA range:2613-2662
Specificity	Phospho-DNA-PKCS (T2647) Polyclonal Antibody detects endogenous levels of DNA-PKCS protein only when phosphorylated at T2647.
Formulation	Liquid in PBS containing 50% glycerol, 0.5% BSA and 0.02% sodium azide.
Storage	Store at -20°C. Avoid repeated freeze-thaw cycles.
Protein Name	DNA-dependent protein kinase catalytic subunit
Gene Name	PRKDC
Cellular localization	Nucleus . Nucleus, nucleolus .
Purification	The antibody was affinity-purified from rabbit antiserum by affinity-chromatography using epitope-specific immunogen.
Clonality	Polyclonal
Concentration	1 mg/ml
Observed band	
Human Gene ID	5591
Human Swiss-Prot Number	P78527
Alternative Names	PRKDC; HYRC; HYRC1; DNA-dependent protein kinase catalytic subunit; DNA-PK catalytic subunit; DNA-PKcs; DNP1; p460
Background	This gene encodes the catalytic subunit of the DNA-dependent protein kinase (DNA-PK). It

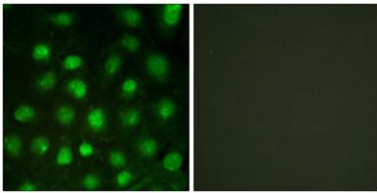


functions with the Ku70/Ku80 heterodimer protein in DNA double strand break repair and recombination. The protein encoded is a member of the PI3/PI4-kinase family.[provided by RefSeq, Jul 2010],



Enzyme-Linked Immunosorbent Assay (Phospho-ELISA) for Immunogen Phosphopeptide (Phospho-left) and Non-Phosphopeptide (Phospho-right), using DNA-PK (Phospho-Thr2647) Antibody

Immunofluorescence analysis of HUVEC cells treated with serum 20% 30', using DNA-PK (Phospho-Thr2647) Antibody. The picture on the right is blocked with the phospho peptide.



Immunohistochemistry analysis of paraffin-embedded human brain, using DNA-PK (Phospho-Thr2647) Antibody. The picture on the right is blocked with the phospho peptide.

