



# TReP-132 rabbit pAb

Cat No.:ES6779

For research use only

## Overview

<b>Product Name</b>	TReP-132 rabbit pAb
<b>Host species</b>	Rabbit
<b>Applications</b>	IHC;IF;ELISA
<b>Species Cross-Reactivity</b>	Human;Mouse
<b>Recommended dilutions</b>	Immunohistochemistry: 1/100 - 1/300. ELISA: 1/5000. Not yet tested in other applications.
<b>Immunogen</b>	The antiserum was produced against synthesized peptide derived from human TREF1. AA range:1071-1120
<b>Specificity</b>	TReP-132 Polyclonal Antibody detects endogenous levels of TReP-132 protein.
<b>Formulation</b>	Liquid in PBS containing 50% glycerol, 0.5% BSA and 0.02% sodium azide.
<b>Storage</b>	Store at -20°C. Avoid repeated freeze-thaw cycles.
<b>Protein Name</b>	Transcriptional-regulating factor 1
<b>Gene Name</b>	TRERF1
<b>Cellular localization</b>	Nucleus .
<b>Purification</b>	The antibody was affinity-purified from rabbit antiserum by affinity-chromatography using epitope-specific immunogen.
<b>Clonality</b>	Polyclonal
<b>Concentration</b>	1 mg/ml
<b>Observed band</b>	
<b>Human Gene ID</b>	55809
<b>Human Swiss-Prot Number</b>	Q96PN7
<b>Alternative Names</b>	TRERF1; BCAR2; RAPA; TREP132; Transcriptional-regulating factor 1; Breast cancer anti-estrogen resistance 2; Transcriptional-regulating protein 132; Zinc finger protein rapa; Zinc finger transcription factor TReP-132
<b>Background</b>	This gene encodes a zinc-finger transcriptional regulating protein which interacts with CBP/p300 to regulate the human gene CYP11A1. Alternative

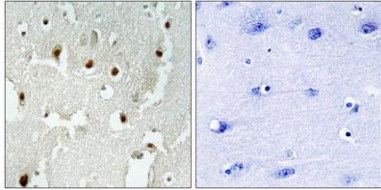




**ELK Biotechnology**

splicing results in multiple transcript variants encoding different isoforms. [provided by RefSeq, Jul 2014],

Immunohistochemistry analysis of paraffin-embedded human brain tissue, using TREF1 Antibody. The picture on the right is blocked with the synthesized peptide.



+86-27-59760950

[ELKbio@ELKbiotech.com](mailto:ELKbio@ELKbiotech.com)

[www.elkbiotech.com](http://www.elkbiotech.com)

23-2, No.388 Gaoxin 2nd Road, Wuhan East Lake Hi-tech Development Zone, Hubei, P.R.C