



Axl (phospho Tyr691) rabbit pAb

Cat No.:ES6770

For research use only

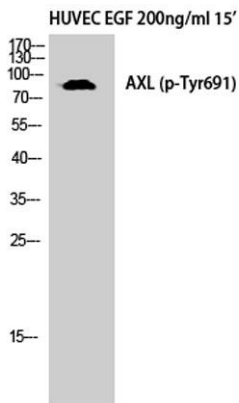
Overview

Product Name	Axl (phospho Tyr691) rabbit pAb
Host species	Rabbit
Applications	WB;IHC;IF;ELISA
Species Cross-Reactivity	Human;Mouse;Rat
Recommended dilutions	Western Blot: 1/500 - 1/2000. Immunohistochemistry: 1/100 - 1/300. ELISA: 1/20000. Not yet tested in other applications.
Immunogen	The antiserum was produced against synthesized peptide derived from human AXL around the phosphorylation site of Tyr691. AA range:657-706
Specificity	Phospho-Axl (Y691) Polyclonal Antibody detects endogenous levels of Axl protein only when phosphorylated at Y691.
Formulation	Liquid in PBS containing 50% glycerol, 0.5% BSA and 0.02% sodium azide.
Storage	Store at -20°C. Avoid repeated freeze-thaw cycles.
Protein Name	Tyrosine-protein kinase receptor UFO
Gene Name	AXL UFO
Cellular localization	Cell membrane ; Single-pass type I membrane protein .
Purification	The antibody was affinity-purified from rabbit antiserum by affinity-chromatography using epitope-specific immunogen.
Clonality	Polyclonal
Concentration	1 mg/ml
Observed band	130kD
Human Gene ID	558
Human Swiss-Prot Number	P30530
Alternative Names	AXL; UFO; Tyrosine-protein kinase receptor UFO; AXL oncogene
Background	The protein encoded by this gene is a member of the Tyro3-Axl-Mer (TAM) receptor tyrosine kinase subfamily. The encoded protein possesses an



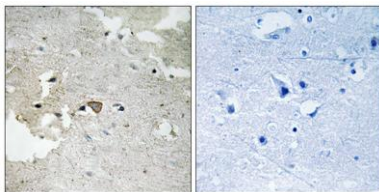


extracellular domain which is composed of two immunoglobulin-like motifs at the N-terminal, followed by two fibronectin type-III motifs. It transduces signals from the extracellular matrix into the cytoplasm by binding to the vitamin K-dependent protein growth arrest-specific 6 (Gas6). This gene may be involved in several cellular functions including growth, migration, aggregation and anti-inflammation in multiple cell types. Alternative splicing results in multiple transcript variants of this gene. [provided by RefSeq, Jul 2013],



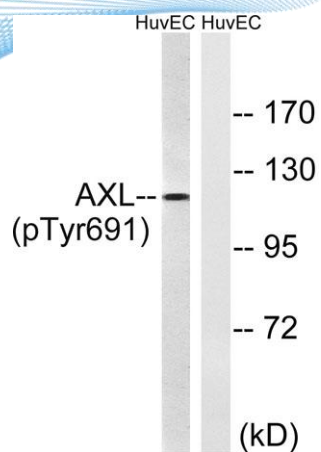
Western Blot analysis of HuvEc cells using Phospho-Axl (Y691) Polyclonal Antibody diluted at 1:500

Immunohistochemistry analysis of paraffin-embedded human brain, using AXL (Phospho-Tyr691) Antibody. The picture on the right is blocked with the phospho peptide.





ELK Biotechnology



Western blot analysis of lysates from HUVEC cells treated with EGF 200ng/ml 15', using AXL (Phospho-Tyr691) Antibody. The lane on the right is blocked with the phospho peptide.



+86-27-59760950

ELKbio@ELKbiotech.com

www.elkbiotech.com

23-2, No.388 Gaoxin 2nd Road,Wuhan East Lake Hi-tech Development Zone, Hubei , P.R.C