



# POLR3B rabbit pAb

Cat No.:ES6747

For research use only

## Overview

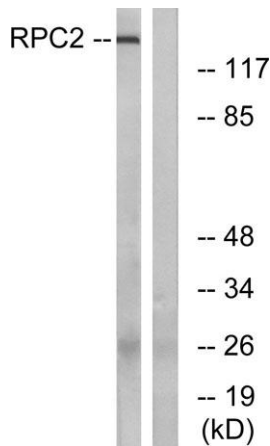
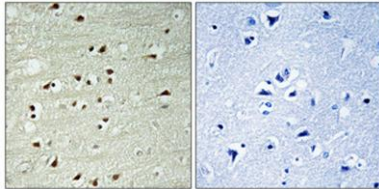
<b>Product Name</b>	POLR3B rabbit pAb
<b>Host species</b>	Rabbit
<b>Applications</b>	WB;IHC;IF;ELISA
<b>Species Cross-Reactivity</b>	Human;Mouse;Rat
<b>Recommended dilutions</b>	Western Blot: 1/500 - 1/2000. Immunohistochemistry: 1/100 - 1/300. ELISA: 1/20000. Not yet tested in other applications.
<b>Immunogen</b>	The antiserum was produced against synthesized peptide derived from human POLR3B. AA range:321-370
<b>Specificity</b>	POLR3B Polyclonal Antibody detects endogenous levels of POLR3B protein.
<b>Formulation</b>	Liquid in PBS containing 50% glycerol, 0.5% BSA and 0.02% sodium azide.
<b>Storage</b>	Store at -20°C. Avoid repeated freeze-thaw cycles.
<b>Protein Name</b>	DNA-directed RNA polymerase III subunit RPC2
<b>Gene Name</b>	POLR3B
<b>Cellular localization</b>	Nucleus .
<b>Purification</b>	The antibody was affinity-purified from rabbit antiserum by affinity-chromatography using epitope-specific immunogen.
<b>Clonality</b>	Polyclonal
<b>Concentration</b>	1 mg/ml
<b>Observed band</b>	128kD
<b>Human Gene ID</b>	55703
<b>Human Swiss-Prot Number</b>	Q9NW08
<b>Alternative Names</b>	POLR3B; DNA-directed RNA polymerase III subunit RPC2; RNA polymerase III subunit C2; C128; DNA-directed RNA polymerase III 127.6 kDa polypeptide; DNA-directed RNA polymerase III subunit B
<b>Background</b>	This gene encodes the second largest subunit of RNA polymerase III, the polymerase responsible for





synthesizing transfer and small ribosomal RNAs in eukaryotes. The largest subunit and the encoded protein form the catalytic center of RNA polymerase III. Mutations in this gene are a cause of hypomyelinating leukodystrophy. Alternatively spliced transcript variants encoding multiple isoforms have been observed for this gene. [provided by RefSeq, Dec 2011],

Immunohistochemical analysis of paraffin-embedded Human brain. Antibody was diluted at 1:100(4° overnight). High-pressure and temperature Tris-EDTA,pH8.0 was used for antigen retrieval. Negative contrl (right) obtaned from antibody was pre-absorbed by i



Western blot analysis of lysates from LOVO cells, using RPC2 Antibody. The lane on the right is blocked with the synthesized peptide.

