



PKA γ cat rabbit pAb

Cat No.:ES6744

For research use only

Overview

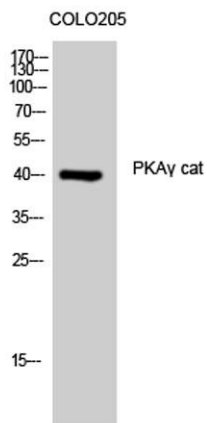
Product Name	PKA γ cat rabbit pAb
Host species	Rabbit
Applications	WB;IHC;IF;ELISA
Species Cross-Reactivity	Human;Rat;Mouse;
Recommended dilutions	Western Blot: 1/500 - 1/2000. Immunohistochemistry: 1/100 - 1/300. ELISA: 1/10000. Not yet tested in other applications.
Immunogen	The antiserum was produced against synthesized peptide derived from human KAPCG. AA range:1-50
Specificity	PKA γ cat Polyclonal Antibody detects endogenous levels of PKA γ cat protein.
Formulation	Liquid in PBS containing 50% glycerol, 0.5% BSA and 0.02% sodium azide.
Storage	Store at -20°C. Avoid repeated freeze-thaw cycles.
Protein Name	cAMP-dependent protein kinase catalytic subunit gamma
Gene Name	PRKACG
Cellular localization	nucleoplasm,cytosol,ciliary base,
Purification	The antibody was affinity-purified from rabbit antiserum by affinity-chromatography using epitope-specific immunogen.
Clonality	Polyclonal
Concentration	1 mg/ml
Observed band	40kD
Human Gene ID	5568
Human Swiss-Prot Number	P22612
Alternative Names	PRKACG; cAMP-dependent protein kinase catalytic subunit gamma; PKA C-gamma
Background	Cyclic AMP-dependent protein kinase (PKA) consists of two catalytic subunits and a regulatory subunit dimer. This gene encodes the gamma form of its catalytic subunit. The gene is intronless and is thought to be a retrotransposon derived from the



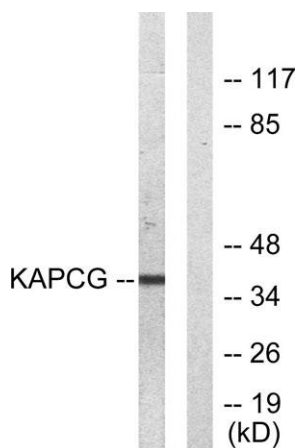


gene for the alpha form of the PKA catalytic subunit.
[provided by RefSeq, Jul 2008],

Western Blot analysis of COLO205 cells using PKA γ cat
Polyclonal Antibody



Western blot analysis of lysates from COLO205 cells, using
KAPCG Antibody. The lane on the right is blocked with the
synthesized peptide.



Immunohistochemical analysis of paraffin-embedded
human brain tumor. 1, Antibody was diluted at 1:200(4°
overnight). 2, Tris-EDTA,pH9.0 was used for antigen
retrieval. 3,Secondary antibody was diluted at 1:200(room
temperature, 45min).

