



# ZIP4 rabbit pAb

Cat No.:ES6734

For research use only

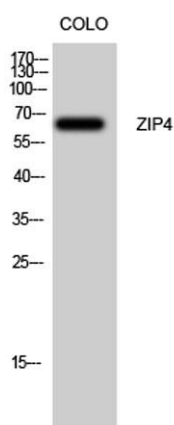
## Overview

<b>Product Name</b>	ZIP4 rabbit pAb
<b>Host species</b>	Rabbit
<b>Applications</b>	WB;ELISA
<b>Species Cross-Reactivity</b>	Human;Rat;Mouse;
<b>Recommended dilutions</b>	Western Blot: 1/500 - 1/2000. ELISA: 1/40000. Not yet tested in other applications.
<b>Immunogen</b>	The antiserum was produced against synthesized peptide derived from human SLC39A4. AA range:431-480
<b>Specificity</b>	ZIP4 Polyclonal Antibody detects endogenous levels of ZIP4 protein.
<b>Formulation</b>	Liquid in PBS containing 50% glycerol, 0.5% BSA and 0.02% sodium azide.
<b>Storage</b>	Store at -20°C. Avoid repeated freeze-thaw cycles.
<b>Protein Name</b>	Zinc transporter ZIP4
<b>Gene Name</b>	SLC39A4
<b>Cellular localization</b>	Cell membrane ; Multi-pass membrane protein . Recycling endosome membrane ; Multi-pass membrane protein . Colocalized with TFRC in the recycling endosomes. Cycles between endosomal compartments and the plasma membrane in response to zinc availability.
<b>Purification</b>	The antibody was affinity-purified from rabbit antiserum by affinity-chromatography using epitope-specific immunogen.
<b>Clonality</b>	Polyclonal
<b>Concentration</b>	1 mg/ml
<b>Observed band</b>	68kD
<b>Human Gene ID</b>	55630
<b>Human Swiss-Prot Number</b>	Q6P5W5
<b>Alternative Names</b>	SLC39A4; ZIP4; Zinc transporter ZIP4; Solute carrier family 39 member 4; Zrt- and Irt-like protein 4; ZIP-4
<b>Background</b>	This gene encodes a member of the

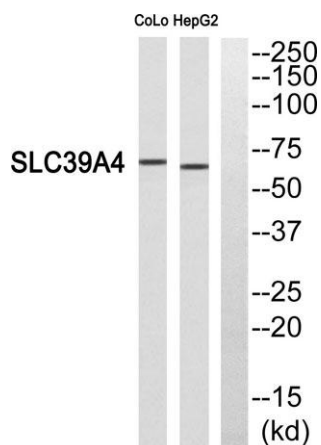




zinc/iron-regulated transporter-like protein (ZIP) family. The encoded protein localizes to cell membranes and is required for zinc uptake in the intestine. Mutations in this gene result in acrodermatitis enteropathica. Multiple transcript variants encoding different isoforms have been found for this gene. [provided by RefSeq, Jul 2013],



Western Blot analysis of Colo cells using ZIP4 Polyclonal Antibody. Secondary antibody(catalog#:RS0002) was diluted at 1:20000



Western blot analysis of SLC39A4 Antibody. The lane on the right is blocked with the SLC39A4 peptide.

