



CLN1 rabbit pAb

Cat No.:ES6725

For research use only

Overview

Product Name	CLN1 rabbit pAb
Host species	Rabbit
Applications	IHC;IF;ELISA
Species Cross-Reactivity	Human;Mouse;Rat
Recommended dilutions	Immunohistochemistry: 1/100 - 1/300. ELISA: 1/10000. Not yet tested in other applications.
Immunogen	The antiserum was produced against synthesized peptide derived from human CLN1. AA range:16-65
Specificity	CLN1 Polyclonal Antibody detects endogenous levels of CLN1 protein.
Formulation	Liquid in PBS containing 50% glycerol, 0.5% BSA and 0.02% sodium azide.
Storage	Store at -20°C. Avoid repeated freeze-thaw cycles.
Protein Name	Palmitoyl-protein thioesterase 1
Gene Name	PPT1
Cellular localization	Lysosome . Secreted .
Purification	The antibody was affinity-purified from rabbit antiserum by affinity-chromatography using epitope-specific immunogen.
Clonality	Polyclonal
Concentration	1 mg/ml
Observed band	37kD
Human Gene ID	5538
Human Swiss-Prot Number	P50897
Alternative Names	PPT1; PPT; Palmitoyl-protein thioesterase 1; PPT-1; Palmitoyl-protein hydrolase 1
Background	The protein encoded by this gene is a small glycoprotein involved in the catabolism of lipid-modified proteins during lysosomal degradation. The encoded enzyme removes thioester-linked fatty acyl groups such as palmitate from cysteine residues. Defects in this gene are a cause of infantile neuronal ceroid lipofuscinosis 1

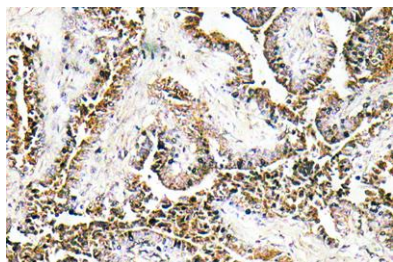




ELK Biotechnology

(CLN1, or INCL) and neuronal ceroid lipofuscinosis 4 (CLN4). Two transcript variants encoding different isoforms have been found for this gene.[provided by RefSeq, Dec 2008],

Immunohistochemistry analysis of CLN1 antibody in paraffin-embedded human prostate carcinoma tissue.



+86-27-59760950

ELKbio@ELKbiotech.com

www.elkbiotech.com

23-2, No.388 Gaoxin 2nd Road,Wuhan East Lake Hi-tech Development Zone, Hubei , P.R.C