



# UEV3 rabbit pAb

Cat No.:ES6720

For research use only

## Overview

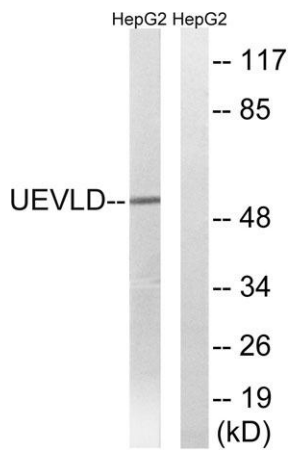
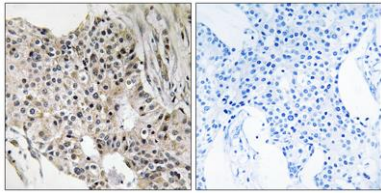
<b>Product Name</b>	UEV3 rabbit pAb
<b>Host species</b>	Rabbit
<b>Applications</b>	WB;IHC;IF;ELISA
<b>Species Cross-Reactivity</b>	Human;Rat;Mouse;
<b>Recommended dilutions</b>	Western Blot: 1/500 - 1/2000. Immunohistochemistry: 1/100 - 1/300. ELISA: 1/40000. Not yet tested in other applications.
<b>Immunogen</b>	The antiserum was produced against synthesized peptide derived from human UEVLD. AA range:141-190
<b>Specificity</b>	UEV3 Polyclonal Antibody detects endogenous levels of UEV3 protein.
<b>Formulation</b>	Liquid in PBS containing 50% glycerol, 0.5% BSA and 0.02% sodium azide.
<b>Storage</b>	Store at -20°C. Avoid repeated freeze-thaw cycles.
<b>Protein Name</b>	Ubiquitin-conjugating enzyme E2 variant 3
<b>Gene Name</b>	UEVLD
<b>Cellular localization</b>	extracellular exosome,
<b>Purification</b>	The antibody was affinity-purified from rabbit antiserum by affinity-chromatography using epitope-specific immunogen.
<b>Clonality</b>	Polyclonal
<b>Concentration</b>	1 mg/ml
<b>Observed band</b>	52kD
<b>Human Gene ID</b>	55293
<b>Human Swiss-Prot Number</b>	Q8IX04
<b>Alternative Names</b>	UEVLD; UEV3; Ubiquitin-conjugating enzyme E2 variant 3; UEV-3; EV and lactate/malate dehydrogenase domain-containing protein
<b>Background</b>	function:Possible negative regulator of polyubiquitination.,similarity:Contains 1 UEV (ubiquitin E2 variant) domain.,similarity:In the C-terminal section; belongs to the LDH/MDH





superfamily, similarity: In the N-terminal section; belongs to the ubiquitin-conjugating enzyme family. UEV subfamily., subunit: Homodimer., tissue specificity: Colon, colon carcinoma cell lines, normal cervical epithelium, carcinomas of the uterine cervix and peripheral blood leukocytes.,

Immunohistochemistry analysis of paraffin-embedded human breast carcinoma tissue, using UEVLD Antibody. The picture on the right is blocked with the synthesized peptide.



Western blot analysis of lysates from HepG2 cells, using UEVLD Antibody. The lane on the right is blocked with the synthesized peptide.

