



ARHGAP17 rabbit pAb

Cat No.:ES6708

For research use only

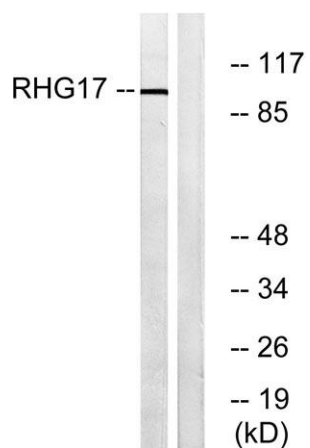
Overview

Product Name	ARHGAP17 rabbit pAb
Host species	Rabbit
Applications	WB;ELISA
Species Cross-Reactivity	Human;Mouse;Rat
Recommended dilutions	Western Blot: 1/500 - 1/2000. ELISA: 1/40000. Not yet tested in other applications.
Immunogen	The antiserum was produced against synthesized peptide derived from human RHG17. AA range:331-380
Specificity	ARHGAP17 Polyclonal Antibody detects endogenous levels of ARHGAP17 protein.
Formulation	Liquid in PBS containing 50% glycerol, 0.5% BSA and 0.02% sodium azide.
Storage	Store at -20°C. Avoid repeated freeze-thaw cycles.
Protein Name	Rho GTPase-activating protein 17
Gene Name	ARHGAP17
Cellular localization	Membrane; Peripheral membrane protein. Cytoplasm. Cell junction, tight junction. Associates with membranes and concentrates at sites of cell-cell contact.
Purification	The antibody was affinity-purified from rabbit antiserum by affinity-chromatography using epitope-specific immunogen.
Clonality	Polyclonal
Concentration	1 mg/ml
Observed band	100kD
Human Gene ID	55114
Human Swiss-Prot Number	Q68EM7
Alternative Names	ARHGAP17; RICH1; MSTP066; MSTP110; Rho GTPase-activating protein 17; Rho-type GTPase-activating protein 17; RhoGAP interacting with CIP4 homologs protein 1; RICH-1
Background	RICH1 is a GTPase-activating protein (GAP). GAPs





stimulate the intrinsic GTP hydrolysis of small G proteins, such as RHOA (MIM 165390), RAC1 (MIM 602048), and CDC42 (MIM 116952).[supplied by OMIM, Apr 2004],



Western blot analysis of lysates from LOVO cells, using RHG17 Antibody. The lane on the right is blocked with the synthesized peptide.

