



# NIPP1 rabbit pAb

Cat No.:ES6707

For research use only

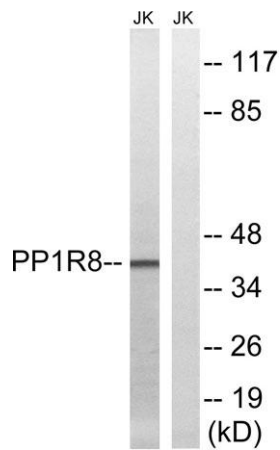
## Overview

<b>Product Name</b>	NIPP1 rabbit pAb
<b>Host species</b>	Rabbit
<b>Applications</b>	WB;ELISA
<b>Species Cross-Reactivity</b>	Human;Mouse;Rat
<b>Recommended dilutions</b>	Western Blot: 1/500 - 1/2000. ELISA: 1/20000. Not yet tested in other applications.
<b>Immunogen</b>	The antiserum was produced against synthesized peptide derived from human PPP1R8. AA range:196-245
<b>Specificity</b>	NIPP1 Polyclonal Antibody detects endogenous levels of NIPP1 protein.
<b>Formulation</b>	Liquid in PBS containing 50% glycerol, 0.5% BSA and 0.02% sodium azide.
<b>Storage</b>	Store at -20°C. Avoid repeated freeze-thaw cycles.
<b>Protein Name</b>	Nuclear inhibitor of protein phosphatase 1
<b>Gene Name</b>	PPP1R8
<b>Cellular localization</b>	Nucleus. Nucleus speckle. Primarily, but not exclusively, nuclear.; [Isoform Gamma]: Cytoplasm. Found mainly in the cytoplasm.
<b>Purification</b>	The antibody was affinity-purified from rabbit antiserum by affinity-chromatography using epitope-specific immunogen.
<b>Clonality</b>	Polyclonal
<b>Concentration</b>	1 mg/ml
<b>Observed band</b>	40kD
<b>Human Gene ID</b>	5511
<b>Human Swiss-Prot Number</b>	Q12972
<b>Alternative Names</b>	PPP1R8; ARD1; NIPP1; Nuclear inhibitor of protein phosphatase 1; NIPP-1; Protein phosphatase 1 regulatory inhibitor subunit 8
<b>Background</b>	This gene, through alternative splicing, encodes three different isoforms. Two of the protein isoforms encoded by this gene are specific inhibitors

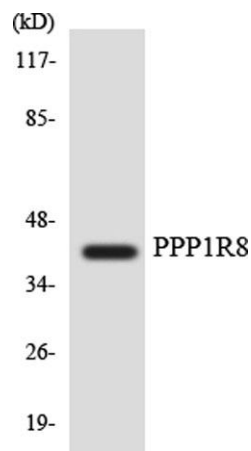




of type 1 serine/threonine protein phosphatases and can bind but not cleave RNA. The third protein isoform lacks the phosphatase inhibitory function but is a single-strand endoribonuclease comparable to RNase E of *E. coli*. This isoform requires magnesium for its function and cleaves specific sites in A+U-rich regions of RNA. [provided by RefSeq, Jul 2008],



Western blot analysis of lysates from Jurkat cells, using PPP1R8 Antibody. The lane on the right is blocked with the synthesized peptide.



Western blot analysis of the lysates from HUVEC cells using PPP1R8 antibody.

