



Atg16 rabbit pAb

Cat No.:ES6700

For research use only

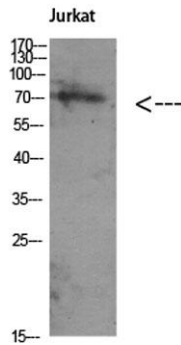
Overview

Product Name	Atg16 rabbit pAb
Host species	Rabbit
Applications	WB;ELISA
Species Cross-Reactivity	Human;Rat;Mouse;
Recommended dilutions	Western Blot: 1/500 - 1/2000. ELISA: 1/5000. Not yet tested in other applications.
Immunogen	Synthesized peptide derived from Atg16 . at AA range: 60-140
Specificity	Atg16 Polyclonal Antibody detects endogenous levels of Atg16 protein.
Formulation	Liquid in PBS containing 50% glycerol, 0.5% BSA and 0.02% sodium azide.
Storage	Store at -20°C. Avoid repeated freeze-thaw cycles.
Protein Name	Autophagy-related protein 16-1
Gene Name	ATG16L1
Cellular localization	Cytoplasm . Preautophagosomal structure membrane ; Peripheral membrane protein . Endosome membrane ; Peripheral membrane protein . Lysosome membrane ; Peripheral membrane protein . Recruited to omegasomes membranes by WIPI2 (By similarity). Omegasomes are
Purification	The antibody was affinity-purified from rabbit antiserum by affinity-chromatography using epitope-specific immunogen.
Clonality	Polyclonal
Concentration	1 mg/ml
Observed band	70kD
Human Gene ID	55054
Human Swiss-Prot Number	Q676U5
Alternative Names	ATG16L1; APG16L; Autophagy-related protein 16-1; APG16-like 1
Background	The protein encoded by this gene is part of a large





protein complex that is necessary for autophagy, the major process by which intracellular components are targeted to lysosomes for degradation. Defects in this gene are a cause of susceptibility to inflammatory bowel disease type 10 (IBD10). Several transcript variants encoding different isoforms have been found for this gene.[provided by RefSeq, Jun 2010],



Western Blot analysis of Jurkat using Antibody diluted at 1:1000. Secondary antibody(catalog#:RS0002) was diluted at 1:20000

