



# TRAC-1 rabbit pAb

Cat No.:ES6685

For research use only

## Overview

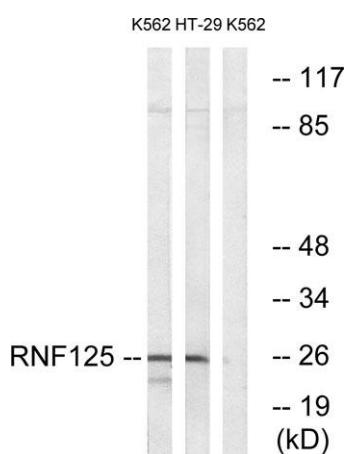
<b>Product Name</b>	TRAC-1 rabbit pAb
<b>Host species</b>	Rabbit
<b>Applications</b>	WB;IHC;IF;ELISA
<b>Species Cross-Reactivity</b>	Human;Mouse;Rat
<b>Recommended dilutions</b>	Western Blot: 1/500 - 1/2000. Immunohistochemistry: 1/100 - 1/300. ELISA: 1/10000. Not yet tested in other applications.
<b>Immunogen</b>	The antiserum was produced against synthesized peptide derived from human RNF125. AA range:131-180
<b>Specificity</b>	TRAC-1 Polyclonal Antibody detects endogenous levels of TRAC-1 protein.
<b>Formulation</b>	Liquid in PBS containing 50% glycerol, 0.5% BSA and 0.02% sodium azide.
<b>Storage</b>	Store at -20°C. Avoid repeated freeze-thaw cycles.
<b>Protein Name</b>	E3 ubiquitin-protein ligase RNF125
<b>Gene Name</b>	RNF125
<b>Cellular localization</b>	Golgi apparatus membrane ; Lipid-anchor . Shows a reticular staining pattern within the cell and is probably expressed at other intracellular membranes in addition to the Golgi membrane. Not detected at the plasma membrane. .
<b>Purification</b>	The antibody was affinity-purified from rabbit antiserum by affinity-chromatography using epitope-specific immunogen.
<b>Clonality</b>	Polyclonal
<b>Concentration</b>	1 mg/ml
<b>Observed band</b>	26kD
<b>Human Gene ID</b>	54941
<b>Human Swiss-Prot Number</b>	Q96EQ8
<b>Alternative Names</b>	RNF125; E3 ubiquitin-protein ligase RNF125; RING finger protein 125; T-cell RING activation protein 1; TRAC-1



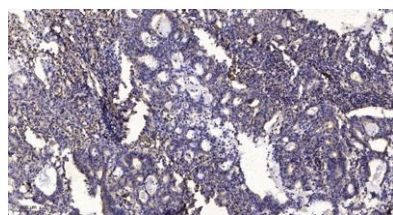


## Background

ring finger protein 125(RNF125) Homo sapiens  
This gene encodes a novel E3 ubiquitin ligase that contains a RING finger domain in the N-terminus and three zinc-binding and one ubiquitin-interacting motif in the C-terminus. As a result of myristoylation, this protein associates with membranes and is primarily localized to intracellular membrane systems. The encoded protein may function as a positive regulator in the T-cell receptor signaling pathway. [provided by RefSeq, Mar 2012],



Western blot analysis of lysates from K562 and HT-29 cells, using RNF125 Antibody. The lane on the right is blocked with the synthesized peptide.



Immunohistochemical analysis of paraffin-embedded human Gastric adenocarcinoma. 1, Antibody was diluted at 1:200(4° overnight). 2, Tris-EDTA,pH9.0 was used for antigen retrieval. 3,Secondary antibody was diluted at 1:200(room temperature, 45min).

