



BCAS3 rabbit pAb

Cat No.:ES6677

For research use only

Overview

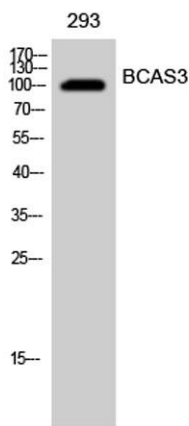
Product Name	BCAS3 rabbit pAb
Host species	Rabbit
Applications	WB;ELISA
Species Cross-Reactivity	Human;Mouse
Recommended dilutions	Western Blot: 1/500 - 1/2000. ELISA: 1/5000. Not yet tested in other applications.
Immunogen	Synthesized peptide derived from BCAS3 . at AA range: 660-740
Specificity	BCAS3 Polyclonal Antibody detects endogenous levels of BCAS3 protein.
Formulation	Liquid in PBS containing 50% glycerol, 0.5% BSA and 0.02% sodium azide.
Storage	Store at -20°C. Avoid repeated freeze-thaw cycles.
Protein Name	Breast carcinoma-amplified sequence 3
Gene Name	BCAS3
Cellular localization	Nucleus . Cytoplasm . Cytoplasm, cytoskeleton . Preautophagosomal structure . Localizes in the cytoplasm in stationary cells. Translocates from the cytoplasm to the leading edge in motile cells. Colocalizes with microtubules and intermediate filaments in
Purification	The antibody was affinity-purified from rabbit antiserum by affinity-chromatography using epitope-specific immunogen.
Clonality	Polyclonal
Concentration	1 mg/ml
Observed band	100kD
Human Gene ID	54828
Human Swiss-Prot Number	Q9H6U6
Alternative Names	BCAS3; Breast carcinoma-amplified sequence 3; GAOB1
Background	developmental stage:Fetal.,disease:A chromosomal aberration involving BCAS3 may be a cause of breast





ELK Biotechnology

cancer. Translocation t(17;20)(q23;q13) with BCAS4.,similarity:Belongs to the WD repeat BCAS3 family.,similarity:Contains 3 WD repeats.,tissue specificity:Stomach, liver, lung, kidney, prostate, testis, thyroid gland, adrenal gland, brain, heart, skeletal muscle, colon, spleen, small intestine, placenta, blood leucocyte and mammary epithelial cells. Overexpressed in most breast cancer cell lines.,



Western Blot analysis of 293 cells using BCAS3 Polyclonal Antibody cells nucleus extracted by Minute TM Cytoplasmic and Nuclear Fractionation kit (SC-003, Inventbiotech, MN, USA).



+86-27-59760950

ELKbio@ELKbiotech.com

www.elkbiotech.com

23-2, No.388 Gaoxin 2nd Road, Wuhan East Lake Hi-tech Development Zone, Hubei, P.R.C