



# MARCH5 rabbit pAb

Cat No.:ES6673

For research use only

## Overview

<b>Product Name</b>	MARCH5 rabbit pAb
<b>Host species</b>	Rabbit
<b>Applications</b>	IF;WB;ELISA
<b>Species Cross-Reactivity</b>	Human;Mouse;Rat
<b>Recommended dilutions</b>	WB 1:500-2000 Immunofluorescence: 1/200 - 1/1000. ELISA: 1/40000. Not yet tested in other applications.
<b>Immunogen</b>	The antiserum was produced against synthesized peptide derived from human MARCH5. AA range:21-70
<b>Specificity</b>	MARCH5 Polyclonal Antibody detects endogenous levels of 40607 protein.
<b>Formulation</b>	Liquid in PBS containing 50% glycerol, 0.5% BSA and 0.02% sodium azide.
<b>Storage</b>	Store at -20°C. Avoid repeated freeze-thaw cycles.
<b>Protein Name</b>	E3 ubiquitin-protein ligase MARCH5
<b>Gene Name</b>	MARCH5
<b>Cellular localization</b>	Mitochondrion outer membrane ; Multi-pass membrane protein . Endoplasmic reticulum membrane ; Multi-pass membrane protein . Authors show that the protein can be detected in endoplasmic reticulum (PubMed:14722266). Authors (PubMed:16874301) show its presence
<b>Purification</b>	The antibody was affinity-purified from rabbit antiserum by affinity-chromatography using epitope-specific immunogen.
<b>Clonality</b>	Polyclonal
<b>Concentration</b>	1 mg/ml
<b>Observed band</b>	37kD
<b>Human Gene ID</b>	54708
<b>Human Swiss-Prot Number</b>	Q9NX47
<b>Alternative Names</b>	MARCH5; RNF153; E3 ubiquitin-protein ligase MARCH5; Membrane-associated RING finger protein

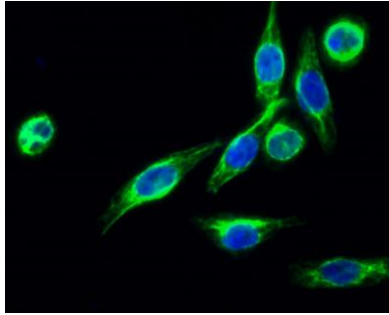




## Background

5; Membrane-associated RING-CH protein V; MARCH-V; Mitochondrial ubiquitin ligase; MITOL; RING finger protein 153

MARCH5 is a ubiquitin ligase of the mitochondrial outer membrane that plays a role in the control of mitochondrial morphology by regulating mitofusin-2 (MFN2; MIM 608507) and DRP1 (DNM1L; MIM 603850) (Nakamura et al., 2006 [PubMed 16936636]).[supplied by OMIM, Mar 2008],



Immunofluorescence analysis of HeLa cell. 1, MARCH5 Polyclonal Antibody (green) was diluted at 1:200 (4° overnight). 2, Goat Anti Rabbit Alexa Fluor 488 Catalog: RS3211 was diluted at 1:1000 (room temperature, 50min). 3 DAPI (blue) 10min.

Immunofluorescence analysis of A549 cells, using MARCH5 Antibody. The picture on the right is blocked with the synthesized peptide.

