



# FAM35A/B rabbit pAb

Cat No.:ES6662

For research use only

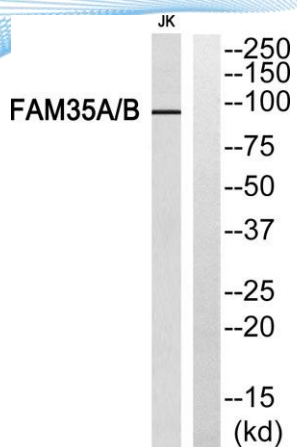
## Overview

<b>Product Name</b>	FAM35A/B rabbit pAb
<b>Host species</b>	Rabbit
<b>Applications</b>	WB;ELISA
<b>Species Cross-Reactivity</b>	Human;Rat;Mouse;
<b>Recommended dilutions</b>	Western Blot: 1/500 - 1/2000. ELISA: 1/10000. Not yet tested in other applications.
<b>Immunogen</b>	The antiserum was produced against synthesized peptide derived from human FAM35A/B. AA range:394-443
<b>Specificity</b>	FAM35A/B Polyclonal Antibody detects endogenous levels of FAM35A/B protein.
<b>Formulation</b>	Liquid in PBS containing 50% glycerol, 0.5% BSA and 0.02% sodium azide.
<b>Storage</b>	Store at -20°C. Avoid repeated freeze-thaw cycles.
<b>Protein Name</b>	Protein FAM35A/B
<b>Gene Name</b>	FAM35A/FAM35B
<b>Cellular localization</b>	Nucleus . Chromosome . Localizes to nuclear foci in response to DNA damage. .
<b>Purification</b>	The antibody was affinity-purified from rabbit antiserum by affinity-chromatography using epitope-specific immunogen.
<b>Clonality</b>	Polyclonal
<b>Concentration</b>	1 mg/ml
<b>Observed band</b>	95kD
<b>Human Gene ID</b>	54537
<b>Human Swiss-Prot Number</b>	Q86V20/A6NDK8
<b>Alternative Names</b>	FAM35A; Protein FAM35A; FAM35B; Protein FAM35B
<b>Background</b>	PTM:Phosphorylated upon DNA damage, probably by ATM or ATR.,similarity:Belongs to the FAM35 family.,

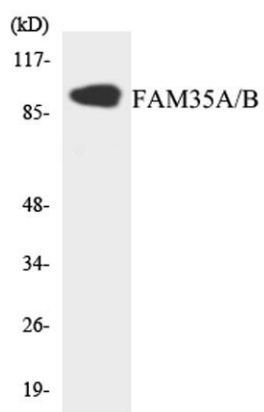




**ELK Biotechnology**



Western blot analysis of FAM35A/B Antibody. The lane on the right is blocked with the FAM35A/B peptide.



Western blot analysis of the lysates from 293 cells using FAM35A/B antibody.



+86-27-59760950

[ELKbio@ELKbiotech.com](mailto:ELKbio@ELKbiotech.com)

[www.elkbiotech.com](http://www.elkbiotech.com)

23-2, No.388 Gaoxin 2nd Road,Wuhan East Lake Hi-tech Development Zone, Hubei , P.R.C