



RIAM rabbit pAb

Cat No.:ES6660

For research use only

Overview

Product Name	RIAM rabbit pAb
Host species	Rabbit
Applications	WB;IHC
Species Cross-Reactivity	Human;Rat;Mouse;
Recommended dilutions	WB 1:500-2000;IHC-p 1:50-300
Immunogen	Synthesized peptide derived from RIAM . at AA range: 430-510
Specificity	RIAM Polyclonal Antibody detects endogenous levels of RIAM protein.
Formulation	Liquid in PBS containing 50% glycerol, 0.5% BSA and 0.02% sodium azide.
Storage	Store at -20°C. Avoid repeated freeze-thaw cycles.
Protein Name	Amyloid beta A4 precursor protein-binding family B member 1-interacting protein
Gene Name	APBB1IP
Cellular localization	Cell membrane ; Peripheral membrane protein . Cell projection, lamellipodium . Cell junction, focal adhesion . Cytoplasm, cytoskeleton . Colocalizes with ENA/VASP proteins at lamellipodia tips and focal adhesions, and F-actin at the leading edge. At the m
Purification	The antibody was affinity-purified from rabbit antiserum by affinity-chromatography using epitope-specific immunogen.
Clonality	Polyclonal
Concentration	1 mg/ml
Observed band	73kD
Human Gene ID	54518
Human Swiss-Prot Number	Q7Z5R6
Alternative Names	APBB1IP; PREL1; RARP1; RIAM; Amyloid beta A4 precursor protein-binding family B member 1-interacting protein; APBB1-interacting protein 1; Proline-rich EVH1 ligand 1; PREL-1; Proline-rich

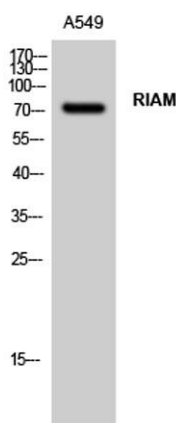




Background

protein 73; Rap1-GTP-interacting adapter molecule;
R

domain: The two Pro-rich regions are required for the suppression of AP1 transcription activity., function: Appears to function in the signal transduction from Ras activation to actin cytoskeletal remodeling. Suppresses insulin-induced promoter activities through AP1 and SRE. Mediates Rap1-induced adhesion., induction: Induced by all-trans-retinoic acid., similarity: Belongs to the MRL family., similarity: Contains 1 PH domain., similarity: Contains 1 Ras-associating domain., subcellular location: Colocalizes with ENA/VASP proteins at lamellipodia tips and focal adhesions, and F-actin at the leading edge. At the membrane surface, associates, via the PH domain, preferentially with the inositol phosphates, PtdIns(5)P and PtdIns(3)P. This binding appears to be necessary for the efficient interaction of the RA domain to Ras-GTPases., subunit: Interacts, through the N-terminal Pro-rich region, with the WW domain of APBB1. Interacts with RAP1A, PFN1, VASP and ENAH., tissue specificity: Widely expressed with high expression in thymus, spleen, lymph node, bone marrow and peripheral leukocytes.,

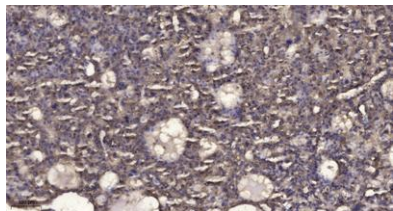


Western Blot analysis of A549 cells using RIAM Polyclonal Antibody





ELK Biotechnology



Immunohistochemical analysis of paraffin-embedded human liver cancer. 1, Antibody was diluted at 1:200(4° overnight). 2, Tris-EDTA,pH9.0 was used for antigen retrieval. 3,Secondary antibody was diluted at 1:200(room temperature, 45min).



+86-27-59760950

ELKbio@ELKbiotech.com

www.elkbiotech.com

23-2, No.388 Gaoxin 2nd Road,Wuhan East Lake Hi-tech Development Zone, Hubei , P.R.C