



DNA pol ϵ A rabbit pAb

Cat No.:ES6644

For research use only

Overview

Product Name	DNA pol ϵ A rabbit pAb
Host species	Rabbit
Applications	IHC;IF;ELISA
Species Cross-Reactivity	Human;Rat
Recommended dilutions	Immunohistochemistry: 1/100 - 1/300. ELISA: 1/40000. Not yet tested in other applications.
Immunogen	The antiserum was produced against synthesized peptide derived from human POLE1. AA range:1261-1310
Specificity	DNA pol ϵ A Polyclonal Antibody detects endogenous levels of DNA pol ϵ A protein.
Formulation	Liquid in PBS containing 50% glycerol, 0.5% BSA and 0.02% sodium azide.
Storage	Store at -20°C. Avoid repeated freeze-thaw cycles.
Protein Name	DNA polymerase epsilon catalytic subunit A
Gene Name	POLE
Cellular localization	Nucleus.
Purification	The antibody was affinity-purified from rabbit antiserum by affinity-chromatography using epitope-specific immunogen.
Clonality	Polyclonal
Concentration	1 mg/ml
Observed band	
Human Gene ID	5426
Human Swiss-Prot Number	Q07864
Alternative Names	POLE; POLE1; DNA polymerase epsilon catalytic subunit A; DNA polymerase II subunit A
Background	DNA polymerase epsilon, catalytic subunit(POLE) Homo sapiens This gene encodes the catalytic subunit of DNA polymerase epsilon. The enzyme is involved in DNA repair and chromosomal DNA replication. Mutations in this gene have been associated with colorectal cancer 12 and facial

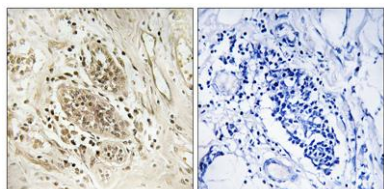




ELK Biotechnology

dysmorphism, immunodeficiency, livedo, and short stature. [provided by RefSeq, Sep 2013],

Immunohistochemistry analysis of paraffin-embedded human breast carcinoma tissue, using POLE1 Antibody. The picture on the right is blocked with the synthesized peptide.



+86-27-59760950

ELKbio@ELKbiotech.com

www.elkbiotech.com

23-2, No.388 Gaoxin 2nd Road, Wuhan East Lake Hi-tech Development Zone, Hubei, P.R.C