



Rab 24 rabbit pAb

Cat No.:ES6630

For research use only

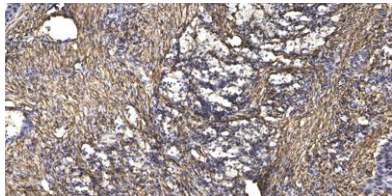
Overview

Product Name	Rab 24 rabbit pAb
Host species	Rabbit
Applications	IHC;IF;ELISA
Species Cross-Reactivity	Human;Mouse;Rat
Recommended dilutions	WB 1:500-2000 ,Immunohistochemistry: 1/100 - 1/300. ELISA: 1/10000. Not yet tested in other applications.
Immunogen	Synthesized peptide derived from Rab 24 . at AA range: 90-170
Specificity	Rab 24 Polyclonal Antibody detects endogenous levels of Rab 24 protein.
Formulation	Liquid in PBS containing 50% glycerol, 0.5% BSA and 0.02% sodium azide.
Storage	Store at -20°C. Avoid repeated freeze-thaw cycles.
Protein Name	Ras-related protein Rab-24
Gene Name	RAB24
Cellular localization	Cytoplasm, cytosol . Membrane ; Lipid-anchor . Only about 20-25% is recovered in the particulate fraction. .
Purification	The antibody was affinity-purified from rabbit antiserum by affinity-chromatography using epitope-specific immunogen.
Clonality	Polyclonal
Concentration	1 mg/ml
Observed band	
Human Gene ID	53917
Human Swiss-Prot Number	Q969Q5
Alternative Names	RAB24; Ras-related protein Rab-24
Background	RAB24 is a small GTPase of the Rab subfamily of Ras-related proteins that regulate intracellular protein trafficking (Oikkonen et al., 1993 [PubMed 8126105]).[supplied by OMIM, Aug 2009],





ELK Biotechnology



Immunohistochemical analysis of paraffin-embedded human Squamous cell carcinoma of lung. 1, Antibody was diluted at 1:200(4° overnight). 2, Tris-EDTA,pH9.0 was used for antigen retrieval. 3,Secondary antibody was diluted at 1:200(room temperature, 45min).



+86-27-59760950

ELKbio@ELKbiotech.com

www.elkbiotech.com

23-2, No.388 Gaoxin 2nd Road,Wuhan East Lake Hi-tech Development Zone, Hubei , P.R.C