



PC-PLD2 (phospho Tyr169) rabbit pAb

Cat No.:ES6615

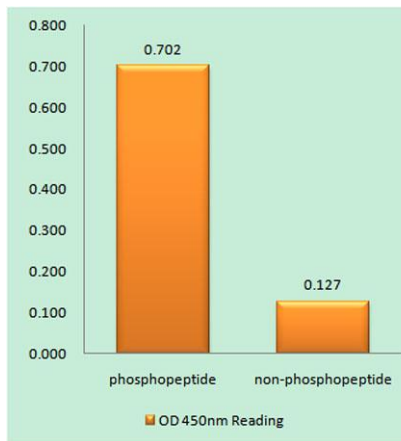
For research use only

Overview

Product Name	PC-PLD2 (phospho Tyr169) rabbit pAb
Host species	Rabbit
Applications	WB;IHC;IF;ELISA
Species Cross-Reactivity	Human;Mouse;Rat
Recommended dilutions	Western Blot: 1/500 - 1/2000. Immunohistochemistry: 1/100 - 1/300. ELISA: 1/10000. Not yet tested in other applications.
Immunogen	The antiserum was produced against synthesized peptide derived from human PLD2 around the phosphorylation site of Tyr169. AA range:136-185
Specificity	Phospho-PC-PLD2 (Y169) Polyclonal Antibody detects endogenous levels of PC-PLD2 protein only when phosphorylated at Y169.
Formulation	Liquid in PBS containing 50% glycerol, 0.5% BSA and 0.02% sodium azide.
Storage	Store at -20°C. Avoid repeated freeze-thaw cycles.
Protein Name	Phospholipase D2
Gene Name	PLD2
Cellular localization	Cell membrane ; Lipid-anchor .
Purification	The antibody was affinity-purified from rabbit antiserum by affinity-chromatography using epitope-specific immunogen.
Clonality	Polyclonal
Concentration	1 mg/ml
Observed band	95kD
Human Gene ID	5338
Human Swiss-Prot Number	O14939
Alternative Names	PLD2; Phospholipase D2; PLD 2; hPLD2; Choline phosphatase 2; PLD1C; Phosphatidylcholine-hydrolyzing phospholipase D2
Background	The protein encoded by this gene catalyzes the hydrolysis of phosphatidylcholine to phosphatidic acid and choline. The activity of the encoded

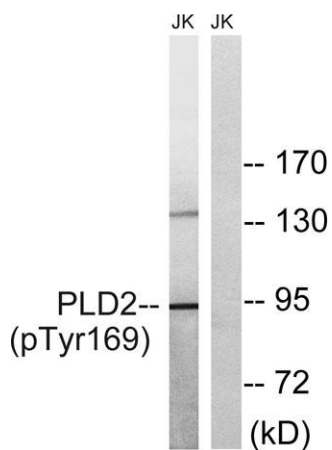
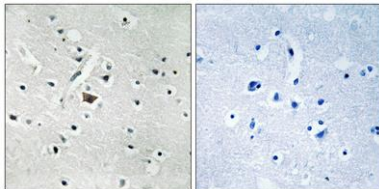


enzyme is enhanced by phosphatidylinositol 4,5-bisphosphate and ADP-ribosylation factor-1. This protein localizes to the peripheral membrane and may be involved in cytoskeletal organization, cell cycle control, transcriptional regulation, and/or regulated secretion. Two transcript variants encoding different isoforms have been found for this gene.[provided by RefSeq, Jul 2011],



Enzyme-Linked Immunosorbent Assay (Phospho-ELISA) for Immunogen Phosphopeptide (Phospho-left) and Non-Phosphopeptide (Phospho-right), using PLD2 (Phospho-Tyr169) Antibody

Immunohistochemistry analysis of paraffin-embedded human brain, using PLD2 (Phospho-Tyr169) Antibody. The picture on the right is blocked with the phospho peptide.



Western blot analysis of lysates from Jurkat cells treated with TNF 20ng/ml 30', using PLD2 (Phospho-Tyr169) Antibody. The lane on the right is blocked with the phospho peptide.

