



# PHKA1/2 rabbit pAb

Cat No.:ES6584

For research use only

## Overview

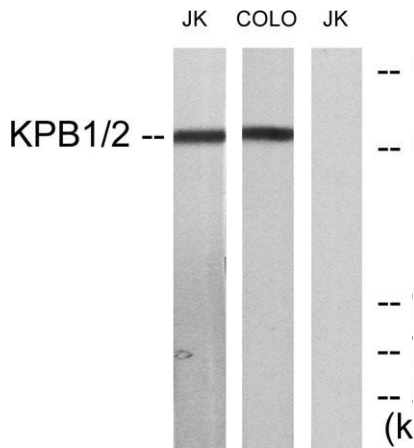
<b>Product Name</b>	PHKA1/2 rabbit pAb
<b>Host species</b>	Rabbit
<b>Applications</b>	WB;ELISA;IHC
<b>Species Cross-Reactivity</b>	Human;Mouse;Rat
<b>Recommended dilutions</b>	WB 1:500-2000;IHC-p 1:50-300; ELISA 2000-20000
<b>Immunogen</b>	The antiserum was produced against synthesized peptide derived from human KPB1/2. AA range:31-80
<b>Specificity</b>	PHKA1/2 Polyclonal Antibody detects endogenous levels of PHKA1/2 protein.
<b>Formulation</b>	Liquid in PBS containing 50% glycerol, 0.5% BSA and 0.02% sodium azide.
<b>Storage</b>	Store at -20°C. Avoid repeated freeze-thaw cycles.
<b>Protein Name</b>	Phosphorylase b kinase regulatory subunit alpha skeletal muscle isoform/Phosphorylase b kinase regulatory subunit alpha liver isoform
<b>Gene Name</b>	PHKA1/PHKA2
<b>Cellular localization</b>	Cell membrane ; Lipid-anchor ; Cytoplasmic side .
<b>Purification</b>	The antibody was affinity-purified from rabbit antiserum by affinity-chromatography using epitope-specific immunogen.
<b>Clonality</b>	Polyclonal
<b>Concentration</b>	1 mg/ml
<b>Observed band</b>	137kD
<b>Human Gene ID</b>	5255/5256
<b>Human Swiss-Prot Number</b>	P46020/P46019
<b>Alternative Names</b>	PHKA1; PHKA; Phosphorylase b kinase regulatory subunit alpha; skeletal muscle isoform; Phosphorylase kinase alpha M subunit; PHKA2; PHKLA; PYK; Phosphorylase b kinase regulatory subunit alpha, liver isoform; Phosphorylase kinase alpha L sub
<b>Background</b>	Phosphorylase kinase is a polymer of 16 subunits,





four each of alpha, beta, gamma and delta. The alpha subunit includes the skeletal muscle and hepatic isoforms, and the skeletal muscle isoform is encoded by this gene. The beta subunit is the same in both the muscle and hepatic isoforms, and encoded by one gene. The gamma subunit also includes the skeletal muscle and hepatic isoforms, which are encoded by two different genes. The delta subunit is a calmodulin and can be encoded by three different genes. The gamma subunits contain the active site of the enzyme, whereas the alpha and beta subunits have regulatory functions controlled by phosphorylation. The delta subunit mediates the dependence of the enzyme on calcium concentration. Mutations in this gene cause glycogen storage disease type 9D, also known as X-linked muscle glycogenosis. Alternatively spliced transcript varian

Immunofluorescence analysis of HeLa cells, using KPBI/2 Antibody. The picture on the right is blocked with the synthesized peptide.

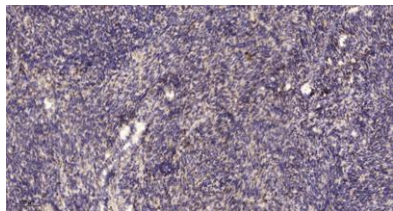


Western blot analysis of lysates from Jurkat and COLO205 cells, using KPBI/2 Antibody. The lane on the right is blocked with the synthesized peptide.





**ELK Biotechnology**



Immunohistochemical analysis of paraffin-embedded human uterus. 1, Antibody was diluted at 1:200(4° overnight). 2, Tris-EDTA,pH9.0 was used for antigen retrieval. 3,Secondary antibody was diluted at 1:200(room temperature, 45min).



+86-27-59760950

[ELKbio@ELKbiotech.com](mailto:ELKbio@ELKbiotech.com)

[www.elkbiotech.com](http://www.elkbiotech.com)

23-2, No.388 Gaoxin 2nd Road,Wuhan East Lake Hi-tech Development Zone, Hubei , P.R.C