



Pepsin A rabbit pAb

Cat No.:ES6576

For research use only

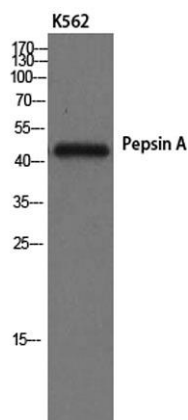
Overview

Product Name	Pepsin A rabbit pAb
Host species	Rabbit
Applications	WB;IHC;IF;ELISA
Species Cross-Reactivity	Human;Rat;Mouse;
Recommended dilutions	Western Blot: 1/500 - 1/2000. Immunohistochemistry: 1/100 - 1/300. ELISA: 1/10000. Not yet tested in other applications.
Immunogen	The antiserum was produced against synthesized peptide derived from human Pepsin A. AA range:258-307
Specificity	Pepsin A Polyclonal Antibody detects endogenous levels of Pepsin A protein.
Formulation	Liquid in PBS containing 50% glycerol, 0.5% BSA and 0.02% sodium azide.
Storage	Store at -20°C. Avoid repeated freeze-thaw cycles.
Protein Name	Pepsin A
Gene Name	PGA3/PGA4/PGA5
Cellular localization	extracellular exosome,multivesicular body lumen,
Purification	The antibody was affinity-purified from rabbit antiserum by affinity-chromatography using epitope-specific immunogen.
Clonality	Polyclonal
Concentration	1 mg/ml
Observed band	42kD
Human Gene ID	5222/643847
Human Swiss-Prot Number	P00790
Alternative Names	Pepsin A; PGA3; PGA4; PGA5
Background	This gene encodes a protein precursor of the digestive enzyme pepsin, a member of the peptidase A1 family of endopeptidases. The encoded precursor is secreted by gastric chief cells and undergoes autocatalytic cleavage in acidic conditions to form the active enzyme, which



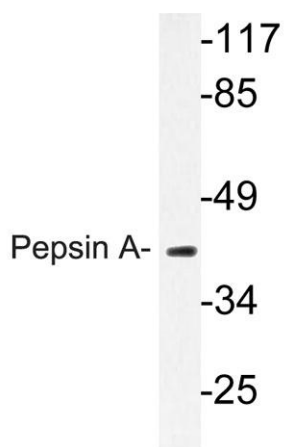
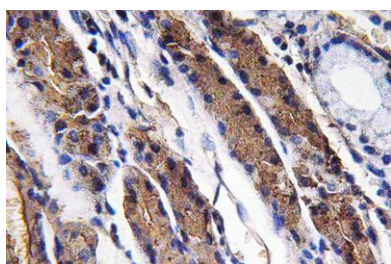


functions in the digestion of dietary proteins. This gene is found in a cluster of related genes on chromosome 11, each of which encodes one of multiple pepsinogens. Pepsinogen levels in serum may serve as a biomarker for atrophic gastritis and gastric cancer. [provided by RefSeq, Jul 2015],



Western Blot analysis of K562 cells using Pepsin A Polyclonal Antibody

Immunohistochemistry analysis of Pepsin A antibody in paraffin-embedded human lung carcinoma tissue.



Western blot analysis of lysate from K562 cells, using Pepsin A antibody.

